

Filter

– Spin-on Filter –

Serie HF 620



Bestellnr. (ohne Filterelement)	Typ	Innen- gewinde G	Code
300-020-1000	HF620.20-B00-GE-XA-DA-XB-DA	3/4"	HHT03084
300-020-1050	HF620.20-B02-GE-XA-DA-XB-DA		HHT03163
300-020-1100	HF620.20-B17-GE-XA-DA-XB-DA		HHT03181
300-020-1150	HF620.30-B00-GG-XA-DA-XB-DA	1 1/4"	HHT03369
300-020-1200	HF620.30-B02-GG-XA-DA-XB-DA		HHT03370
300-020-1250	HF620.30-B17-GG-XA-DA-XB-DA		HHT03371
300-020-1300	HF620.40-B00-GH-XC-DA	1 1/2"	HHT03116
300-020-1350	HF620.40-B02-GH-XC-DA		HHT03111
300-020-1400	HF620.40-B17-GH-XC-DA		HHT03121
300-020-1450	HF620.50-B00-GH-XD-DA	1 1/2"	HHT03129
300-020-1500	HF620.50-B02-GH-XD-DA		HHT03131
300-020-1550	HF620.50-B17-GH-XD-DA		HHT03141
300-020-1600	HF620.50-B00SAE300011/2"		HF620.50-B00 SAE3000
300-020-1650	HF620.50-B02SAE300011/2"		HHT03134
300-020-1700	HF620-50-B17SAE300011/2"		HHT03151

– Spin-on Filterelement –



Bestellnr.	für Filter- gehäuse	Typ	max. empfohlener Durchfluss für Saugfilter l/min	max. empfohlener Durchfluss für Rücklauf- filter l/min	Code	
300-025-1000	HF620.20	HEK45-20.135-AS-FG010-B	15	40	HHC01803	
300-025-1050		HEK45-20.135-AS-FG025-B	15	40	HHC01856	
300-025-1100		HEK45-20.135-AS-SP010-B	20	50	HHC01838	
300-025-1150		HEK45-20.135-AS-SP025-B	25	60	HHC01841	
300-025-1200		HEK45-20.135-AS-MS060-B	30	70	HHC01822	
300-025-1250		HEK45-20.180-AS-FG003-B	?	?	HEK 45-20.180-AS-FG0	
300-025-1300		HEK45-20.180-AS-FG010-B	20	50	HHC01807	
300-025-1350		HEK45-20.180-AS-FG025-B	20	50	HHC01845	
300-025-1400		HEK45-20.180-AS-SP010-B	25	60	HHC01836	
300-025-1450		HEK45-20.180-AS-SP025-B	30	70	HHC01806	
300-025-1500		HEK45-20.180-AS-MS060-B	35	80	HHC01823	
300-025-1550		HF620.30	HEK45-30.155-AS-FG003-B	?	?	HHC01872
300-025-1600			HEK45-30.155-AS-FG010-B	60	120	HHC01813
300-025-1650			HEK45-30.155-AS-FG025-B	60	120	HHC01848
300-025-1700			HEK45-30.155-AS-SP010-B	70	140	HHC01834
300-025-1750	HEK45-30.155-AS-SP025-B		60	180	HHC01843	
300-025-1800	HEK45-30.155-AS-MS060-B		110	190	HHC01824	
300-025-1850	HEK45-30.210-AS-FG010-B		80	140	HHC01817	
300-025-1900	HEK45-30.210-AS-FG025-B		80	140	HHC01858	
300-025-1950	HEK45-30.210-AS-SP010-B		90	160	HHC01832	
300-025-2000	HEK45-30.210-AS-SP025-B		100	190	HHC01816	
300-025-2050	HEK45-30.210-AS-MS060-B	115	200	HHC01825		

300-020

SUCTION AND RETURN IN LINE FILTERS SERIES HF 620 - HF 625



Replaces: HF 620 01 T E

The filters HF 620 series are specifically designed to be connected on the suction or in the return line of the hydraulic circuit and provide versatility to safeguard the circuit components from contaminating particles. The filters HF 625 series are suitable for working pressure up to 25 bar.

- ADJUSTABLE SETTING BY-PASS VALVE
- DIFFERENTIAL CONTROL OF THE CLOGGING VALUES

COMPLETE FILTER		
MATERIALS	Head	Aluminum
	Bowl	Steel
	Seals	Buna - Viton
FLUID COMPATIBILITY CONFORMING TO ISO 2943	With reference to ISO 6743/4	With fluid (HH-HL-HM-HR-HV-HG), and water emulsion (HFAE-HFAS) use filters with Buna seals. With water - glycol (HFC) ask for anodizing treatment.
		With synthetic fluid (HS-HFDR-HFDU-HFDS) use filters with Viton seals
FLOW RANGE	min.	20 [l/min]
	max.	400 [l/min]
MAX. WORKING PRESSURE		700 [kPa] 7 bar (HF620) - 2500 [kPa] 25 bar (HF625)
TESTING PRESSURE		1000 [kPa] 10 bar (HF620) - 5000 [kPa] 50 bar (HF625)
BURST PRESSURE		1500 [kPa] 15 bar (HF620) - 7500 [kPa] 75 bar (HF625)
OPERATING TEMPERATURE	With Buna seals	- 30 + 90 [°C]
	With Viton seals	- 20 + 110 [°C]
FILTER ELEMENTS		
MATERIALS	End cap - Inner tube	Zinc plated steel. With water - glycol ask for tin treatment.
	Filter media	Steel
		Cellulose Micro-fibre glass
REMOVAL RATING		Conforming to ISO 16889
ELEMENT COLLAPSE PRESSURE RATING	Conforming to ISO 2941	400 [kPa] 4 bar 1000 [kPa] 10 bar (only for micro-fibre glass or steel wire mesh HE K46 elements)

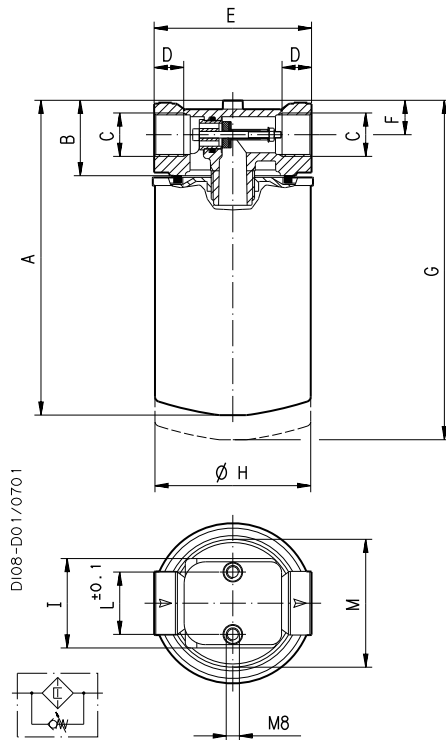
Edition: 02/09.2001

IKRON S.r.l.

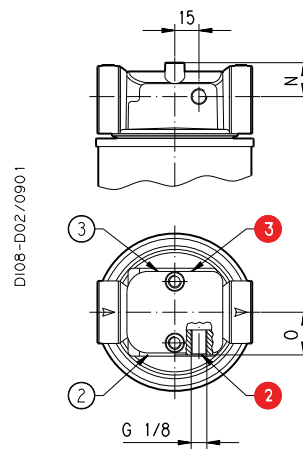
43044 Lemignano di Collecchio (PR) - Italy Via C. Prampolini, 2
Telephone: (+ 39) 0521 304911 - Fax (+ 39) 0521 304900 - <http://www.casappa.com> - e-mail: ikron@casappa.com

TECHNICAL DATA

STANDARD FILTER



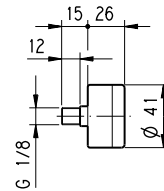
ARRANGEMENT AND INDICATORS



PRESSURE/VACUUM GAUGE

M

D108-D10/0701

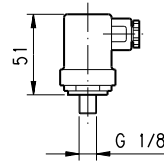


- RETURN
- SUCTION

ELECTRICAL INDICATOR

E

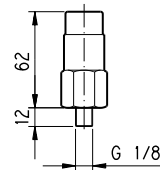
D108-D12/0701



VISUAL INDICATOR

V

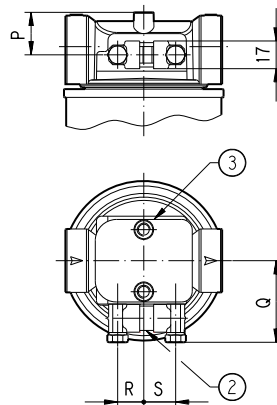
D108-D11/0701



INDICATOR FOR FILTERS MOUNTED ONLY ON RETURN LINE

VISUAL DIFFERENTIAL INDICATOR

D



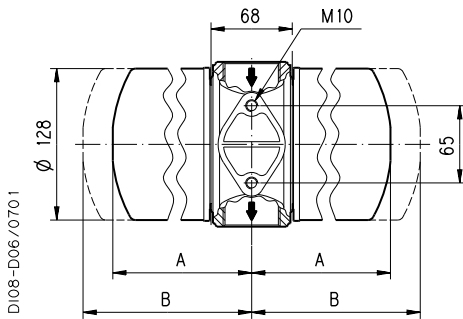
D108-D04/0701

Filter type	A	B	C	D	E	F	G	Ø H	I	L	M	N	O	P	Q	R	S
	mm	mm	GAS-BSPP	mm	mm	mm	mm	mm	mm	mm	mm	mm	mm	mm	mm	mm	mm
HF 620-20.135	195	46	G 3/4	18	96	21	215	96	54,5	38	78	21	27	26	50	16	19,5
HF 620-20.180	240						260										
HF 620-30.155	248	64	G 1 1/4	22	134	33	273	128	72	50	114	35	36	37	59	15	20,5
HF 620-30.210	292						317										
For working pressure up to 25 bar																	
HF 625-20.135	195	46	G 3/4	18	96	21	215	96	54,5	38	78	21	26,5	26	50	16	19,5
HF 625-20.180	257						277										

Replaces: 06.98

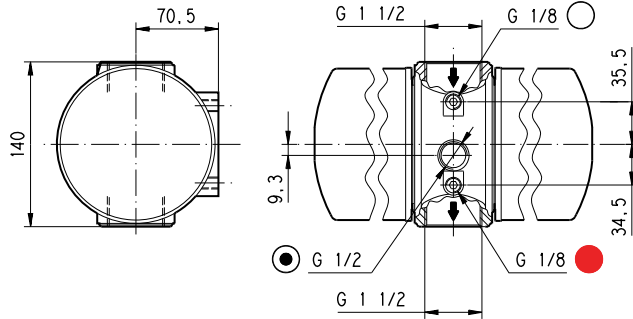
D108-002 - 02/09.01

TECHNICAL DATA



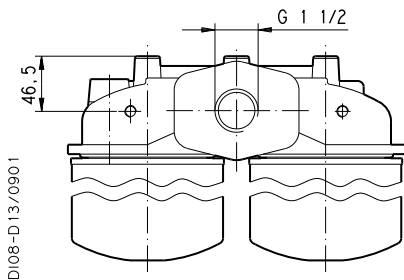
Filter type	A	B
	mm	mm
HF 620-40.155	218	238
HF 620-40.210	262	282

The standard filter is furnished arranged for the indicators (XC) G 1/8 with plug (DA).



- RETURN
- RETURN
- SUCTION

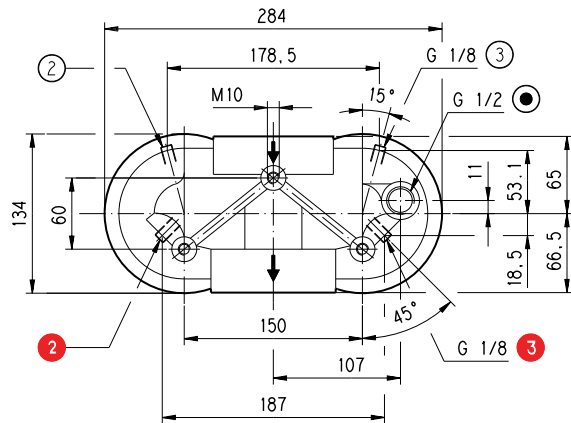
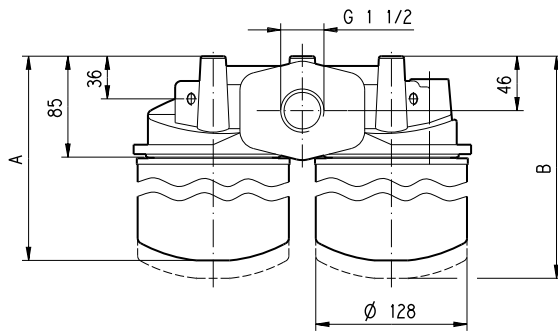
Replaces: 06.98



- RETURN
- RETURN
- SUCTION

Filter type	A	B
	mm	mm
HF 620-50.155	269	291
HF 620-50.210	313	335

The standard filter is furnished arranged for the indicators (XD) G 1/8 with plug (DA).



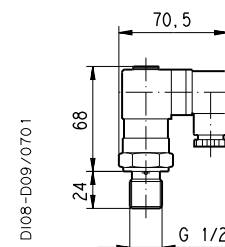
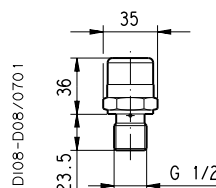
D108-002 - 02/09.01

SUCTION LINE		
POSITION	INDICATOR	CODE
○ ●	PRESSURE/VAC. GAUGE	M
	VISUAL	V
	ELECTRICAL	E
RETURN LINE		
POSITION	INDICATOR	CODE
○ ●	PRESSURE/VAC. GAUGE	M
	VISUAL	V
	ELECTRICAL	E
● ●	VISUAL DIFF. INDICATOR	H
	EL. - VISUAL DIFF. INDIC.	L

See drawing and note on the side page.

VISUAL DIFF. INDICATOR
H

EL. - VISUAL DIFF. INDIC.
L



HOW TO ORDER A COMPLETE FILTER

1	2	3	4	5
HF 620-20.135	-	AS	-	MS090
6	7	8	9	
B	-	XA	-	GA
				M

1	Filter type	CODE
See tables	HF62...	
2	Filtering surface	CODE
Standard	AS	
3	Degree of filtration	CODE
10 [µm] Micro-fibre glass	FG010	
25 [µm] Micro-fibre glass	FG025	
60 [µm] Steel wire mesh	MS060	
90 [µm] Steel wire mesh	MS090	
125 [µm] Steel wire mesh	MS125	
10 [µm] Cellulose	SP010	
25 [µm] Cellulose	SP025	
4	By-pass valve	CODE
Setting 20 [kPa]; 0,2 [bar] (suction only)	B02	
Setting 170 [kPa]; 1,7 [bar] (return only)	B17	
None	B00	
5	Inlet port	CODE
Thread GAS (BSPP)		
G 3/4	GE	
G 1 1/4	GG	
G 1 1/2	GH	

6	Seals	CODE
Buna	B	
Viton	V	
7	Indicators arrang.	CODE
None	XN	
On the head - right ②	XA	
On the head - left ③	XB	
Standard for HF620-40 only	XC	
Standard right and left HF620-50 only	XD	
8	Dim. Indicat. ports	CODE
Thread GAS (BSPP)		
G 1/8	GA	
G 1/8 WITH PLUG	DA	
G 1/4	GB	
G 1/4 WITH PLUG	DB	
G 1/2	GD	
G 1/2 WITH PLUG	DD	
Holes on the wall for ind. D	FP	

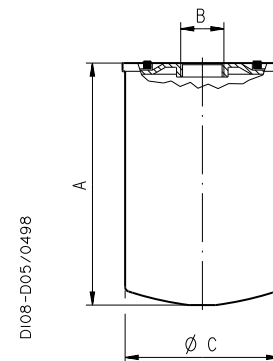
9	Indicators	CODE
None	G	
Pressure/vacuum gauge - rear	M	
Visual indicator	V	
Electrical indicator	E	
Visual differential indicator (for HF620-20 - HF620-30 only)	D	
Visual differential indicator (for HF620-40 - HF620-50 only)	H	
El.-visual differential indicator (for HF620-40 - HF620-50 only)	L	

Standard
 On request

Replaces: 06.98

FILTERING ELEMENTS - TECHNICAL DATA

Element type	A	B	Ø C
	mm	GAS - BSPP	mm
HE K45-20.135	148	G 3/4	96
HE K45-20.180	193		
HE K45-30.155	183	G 1 1/4	128
HE K45-30.210	227		
For working pressure up to 25 bar			
HE K46-20.135	148	G 3/4	96
HE K46-20.180	210		



HOW TO ORDER A REPLACEMENT ELEMENT

1	2	3	4
HE K45-20.135	-	AS	-
		MS090	-
			B

1	Element type	CODE
See table	HEK4...	
2	Filtering surface	CODE
Standard	AS	

3	Degree of filtration	CODE
10 [µm] Micro-fibre glass	FG010	
25 [µm] Micro-fibre glass	FG025	
60 [µm] Steel wire mesh	MS060	
90 [µm] Steel wire mesh	MS090	
125 [µm] Steel wire mesh	MS125	
10 [µm] Cellulose	SP010	
25 [µm] Cellulose	SP025	

4	Seals	CODE
Buna	B	
Viton	V	

Standard
 On request

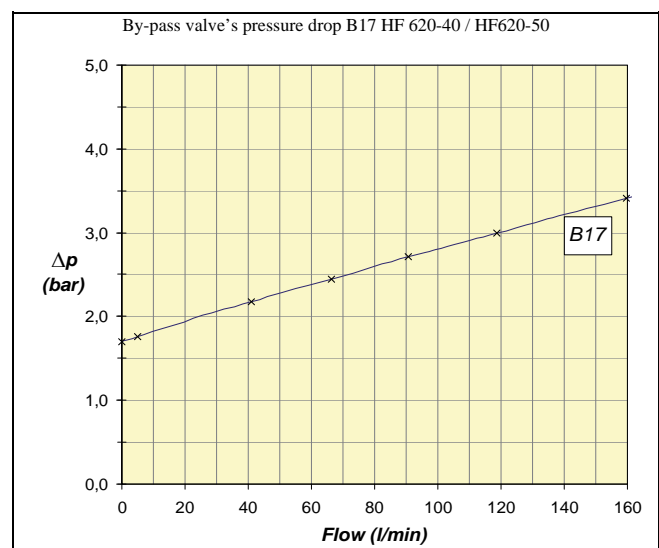
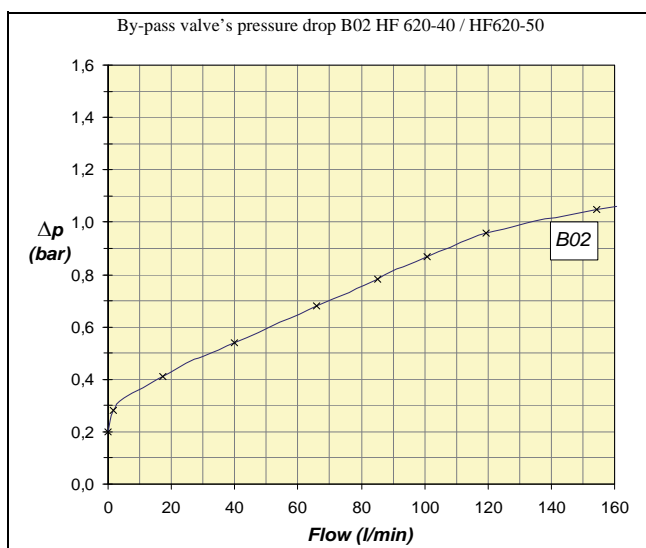
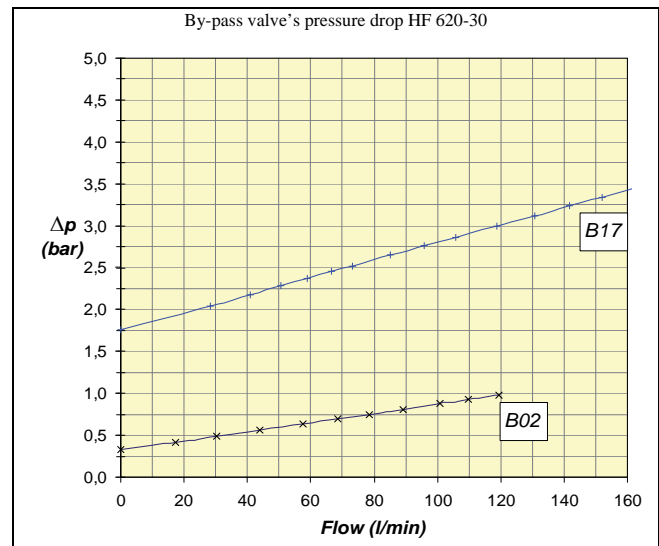
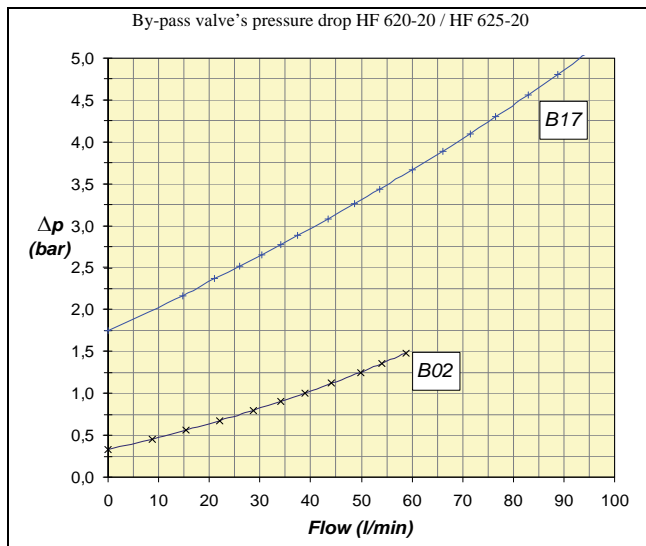
D108-002 - 02/09.01

SUCTION AND RETURN FILTERS SERIES HF 620 - 625

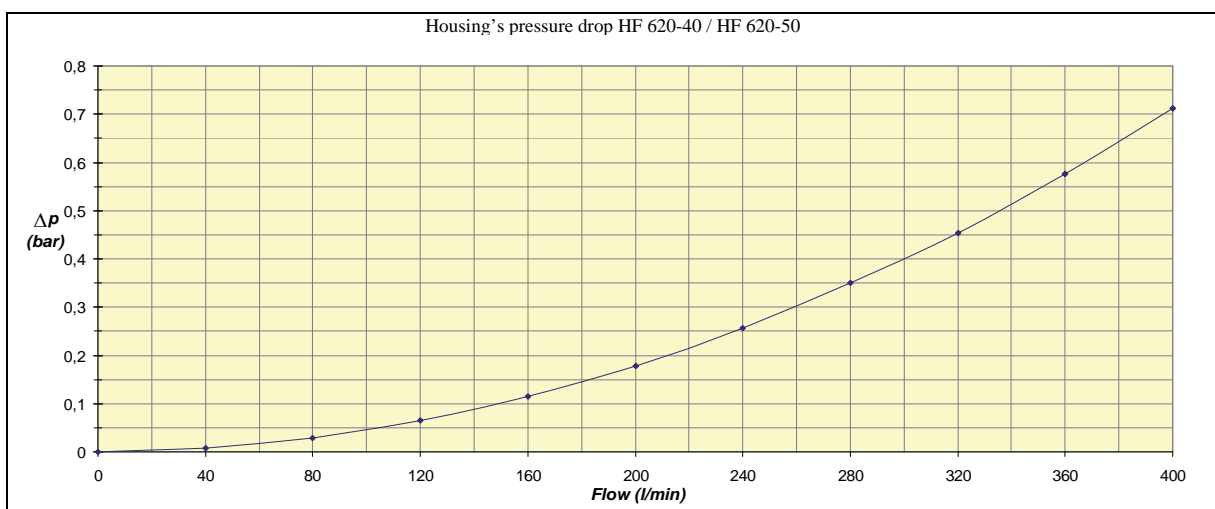
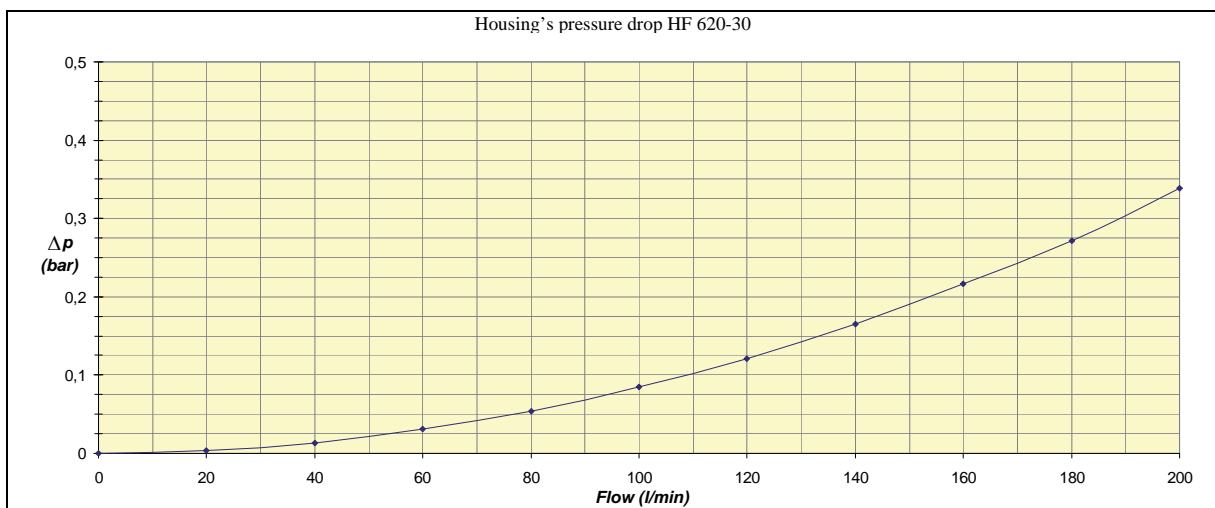
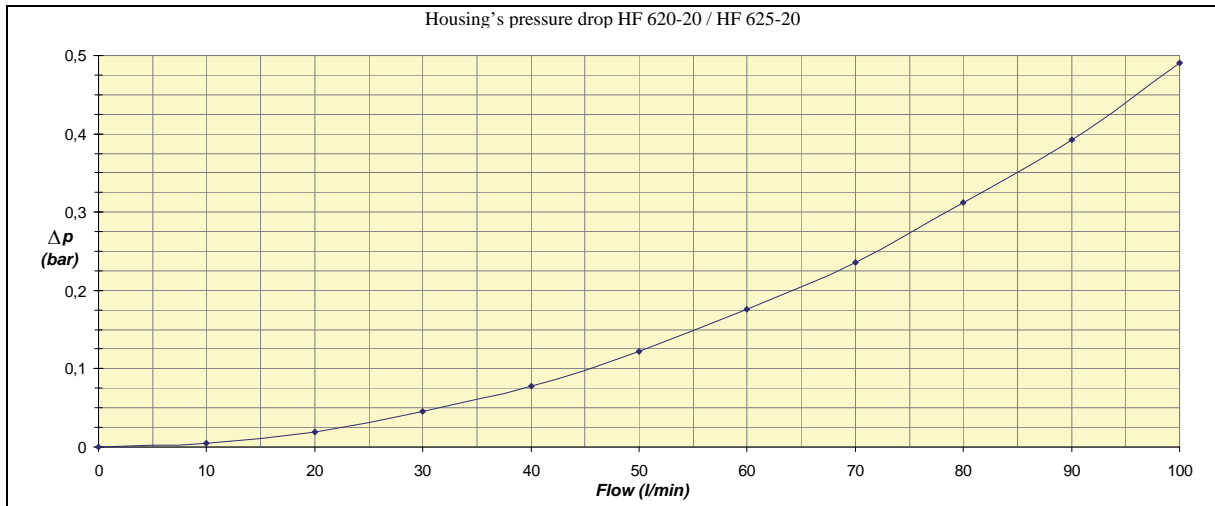
PRESSURE DROP CURVES

The pressure drop for filters series HF 620 on suction line is 0,2 bar max; the pressure drop for filters series HF 620 and HF 625 on return has to be between 0,2 and 0,4 bar.

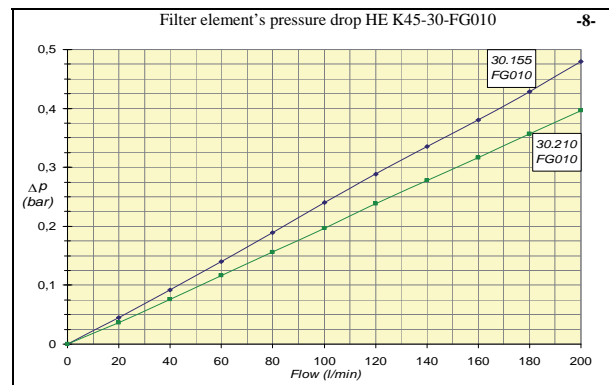
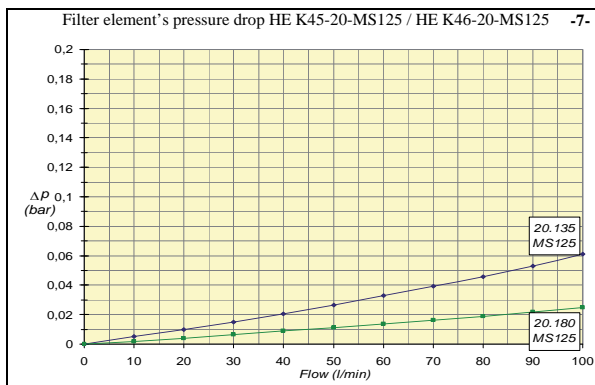
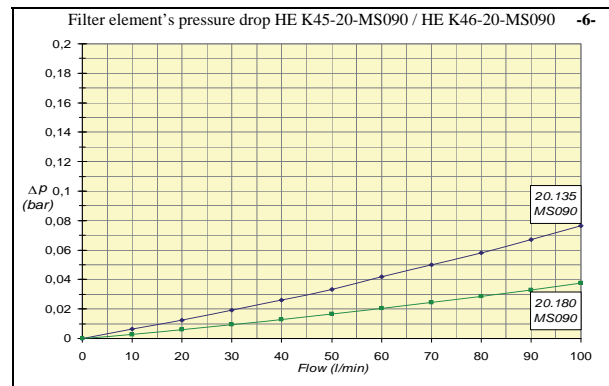
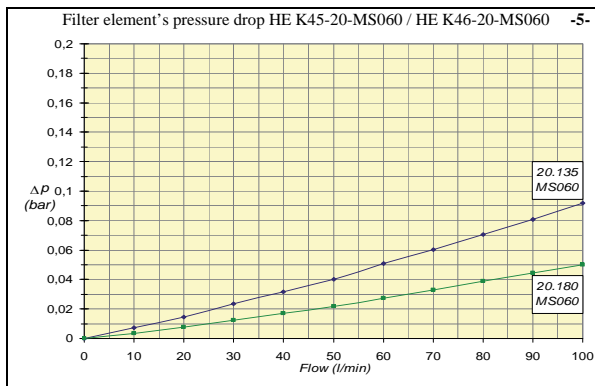
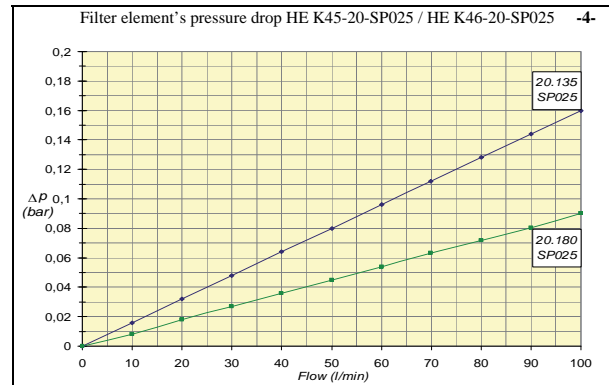
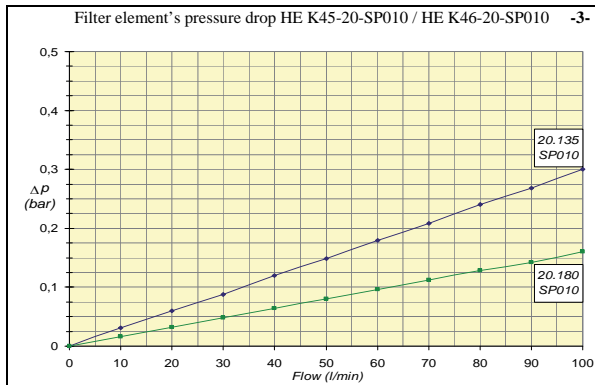
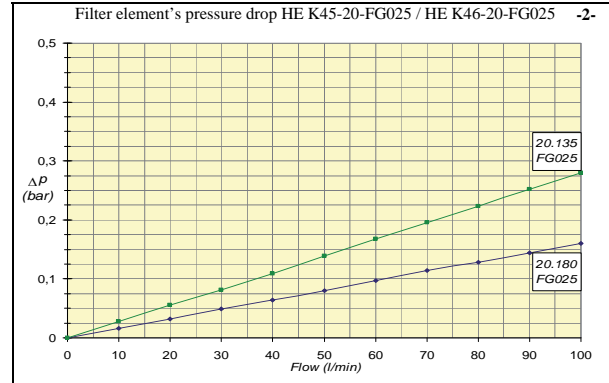
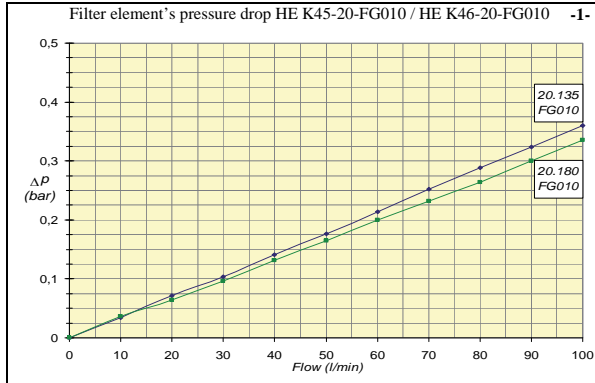
1) The **by-pass pressure drop** is directly proportional to fluid specific gravity and it's irrelevant to determine the total pressure drop.

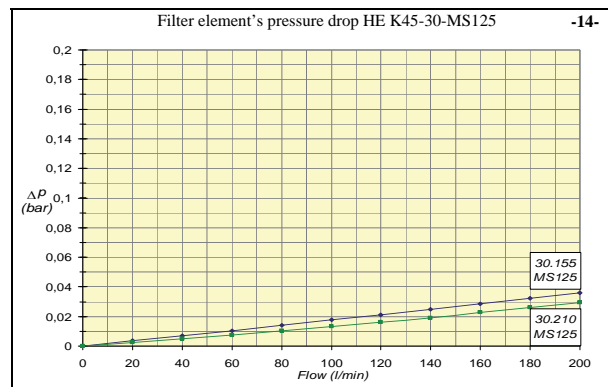
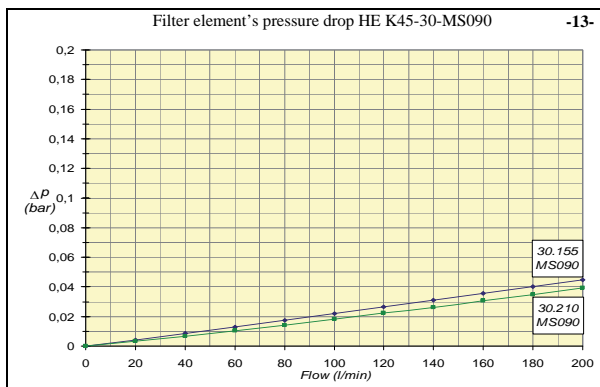
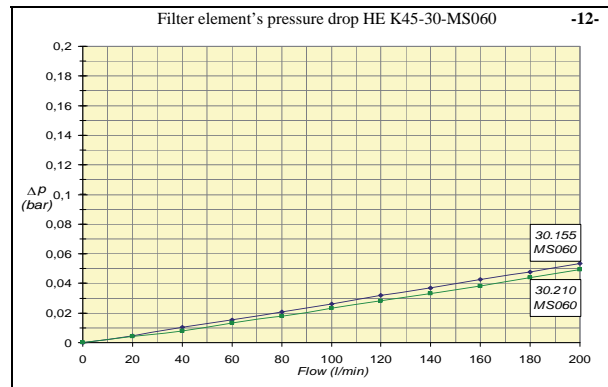
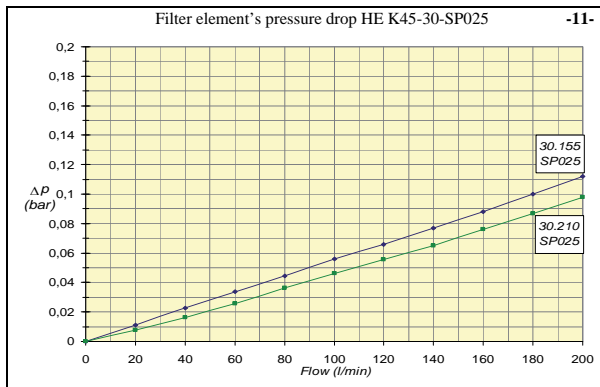
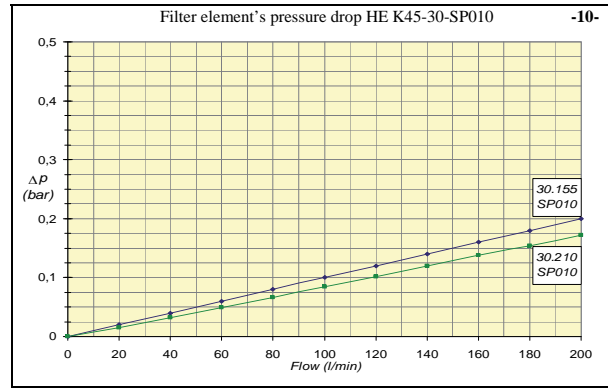
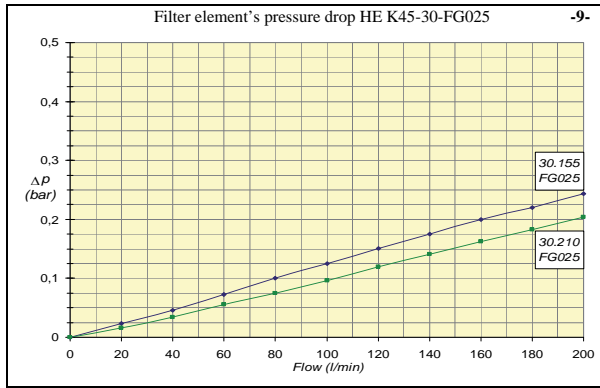


2) The **housing's pressure drop** is determined by the sum of the inlet and outlet port dimension.



3) The **filter element's pressure drop** is determined by standard media and AS surface, they have been calculated experimentally and they are valid for clean elements.





**FILTRI HF 620 - 625 / FILTERS HF 620 - 625
LINEA DI ASPIRAZIONE / SUCTION LINE**

Bocca Ingresso Inlet Port	10 MICRON ASS./ABS.		25 MICRON ASS./ABS.		10 MICRON NOM.		Peso Filtro Filter Weight (Kg)
	Portata Flow (lt/min)	Filtro Tipo Filter Type	Portata Flow (lt/min)	Filtro Tipo Filter Type	Portata Flow (lt/min)	Filtro Tipo Filter Type	
G 3/4"	15	HF620-20.135 HF625-20.135 FG010	15	HF620-20.135 HF625-20.135 FG025	20	HF620-20.135 HF625-20.135 SP010	1
G 3/4"	20	HF620-20.180 HF625-20.180 FG010	20	HF620-20.180 HF625-20.180 FG025	25	HF620-20.180 HF625-20.180 SP010	1,2
G 1"1/4	60	HF620-30.155 FG010	60	HF620-30.155 FG025	70	HF620-30.155 SP010	1,9
G 1"1/4	80	HF620-30.210 FG010	80	HF620-30.210 FG025	90	HF620-30.210 SP010	2
G 1"1/2	150	HF620-40.155 FG010	150	HF620-40.155 FG025	170	HF620-40.155 SP010	3,4
G 1"1/2	160	HF620-40.210 FG010	160	HF620-40.210 FG025	180	HF620-40.210 SP010	3,5
G 1"1/2	150	HF620-50.155 FG010	150	HF620-50.155 FG025	170	HF620-50.155 SP010	5,3
G 1"1/2	160	HF620-50.210 FG010	160	HF620-50.210 FG025	180	HF620-50.210 SP010	5,4

Bocca Ingresso Inlet Port	25 MICRON NOM.		60 MICRON		90 - 125 MICRON		Peso Filtro Filter Weight (Kg)
	Portata Flow (lt/min)	Filtro Tipo Filter Type	Portata Flow (lt/min)	Filtro Tipo Filter Type	Portata Flow (lt/min)	Filtro Tipo Filter Type	
G 3/4"	25	HF620-20.135 HF625-20.135 SP025	30	HF620-20.135 HF625-20.135 MS060	35	HF620-20.135 HF625-20.135 MS090-MS125	1
G 3/4"	30	HF620-20.180 HF625-20.180 SP025	35	HF620-20.180 HF625-20.180 MS060	40	HF620-20.180 HF625-20.180 MS090-MS125	1,2
G 1"1/4	85	HF620-30.155 SP025	110	HF620-30.155 MS060	120	HF620-30.155 MS090-MS125	1,9
G 1"1/4	100	HF620-30.210 SP025	115	HF620-30.210 MS060	125	HF620-30.210 MS090-MS125	2
G 1"1/2	190	HF620-40.155 SP025	220	HF620-40.155 MS060	240	HF620-40.155 MS090-MS125	3,4
G 1"1/2	210	HF620-40.210 SP025	230	HF620-40.210 MS060	250	HF620-40.210 MS090-MS125	3,5
G 1"1/2	190	HF620-50.155 SP025	220	HF620-50.155 MS060	240	HF620-50.155 MS090-MS125	5,3
G 1"1/2	210	HF620-50.210 SP025	230	HF620-50.210 MS060	250	HF620-50.210 MS090-MS125	5,4

FILTRI HF 620 - 625 / FILTERS HF 620 - 625
LINEA AL RITORNO / RETURN LINE

Bocca Ingresso Inlet Port	10 MICRON ASS./ABS.		25 MICRON ASS./ABS.		10 MICRON NOM.		Peso Filtro Filter Weight (Kg)
	Portata Flow (lt/min)	Filtro Tipo Filter Type	Portata Flow (lt/min)	Filtro Tipo Filter Type	Portata Flow (lt/min)	Filtro Tipo Filter Type	
G 3/4"	40	HF620-20.135 HF625-20.135 FG010	40	HF620-20.135 HF625-20.135 FG025	50	HF620-20.135 HF625-20.135 SP010	1
G 3/4"	50	HF620-20.180 HF625-20.180 FG010	50	HF620-20.180 HF625-20.180 FG025	60	HF620-20.180 HF625-20.180 SP010	1,2
G 1"1/4	120	HF620-30.155 FG010	120	HF620-30.155 FG025	140	HF620-30.155 SP010	1,9
G 1"1/4	140	HF620-30.210 FG010	140	HF620-30.210 FG025	160	HF620-30.210 SP010	2
G 1"1/2	280	HF620-40.155 FG010	280	HF620-40.155 FG025	300	HF620-40.155 SP010	3,4
G 1"1/2	300	HF620-40.210 FG010	300	HF620-40.210 FG025	320	HF620-40.210 SP010	3,5
G 1"1/2	280	HF620-50.155 FG010	280	HF620-50.155 FG025	300	HF620-50.155 SP010	5,3
G 1"1/2	300	HF620-50.210 FG010	300	HF620-50.210 FG025	320	HF620-50.210 SP010	5,4

Bocca Ingresso Inlet Port	25 MICRON NOM.		60 MICRON		90 - 125 MICRON		Peso Filtro Filter Weight (Kg)
	Portata Flow (lt/min)	Filtro Tipo Filter Type	Portata Flow (lt/min)	Filtro Tipo Filter Type	Portata Flow (lt/min)	Filtro Tipo Filter Type	
G 3/4"	60	HF620-20.135 HF625-20.135 SP025	70	HF620-20.135 HF625-20.135 MS060	75	HF620-20.135 HF625-20.135 MS090-MS125	1
G 3/4"	70	HF620-20.180 HF625-20.180 SP025	80	HF620-20.180 HF625-20.180 MS060	85	HF620-20.180 HF625-20.180 MS090-MS125	1,2
G 1"1/4	180	HF620-30.155 SP025	190	HF620-30.155 MS060	200	HF620-30.155 MS090-MS125	1,9
G 1"1/4	190	HF620-30.210 SP025	200	HF620-30.210 MS060	210	HF620-30.210 MS090-MS125	2
G 1"1/2	340	HF620-40.155 SP025	380	HF620-40.155 MS060	390	HF620-40.155 MS090-MS125	3,4
G 1"1/2	360	HF620-40.210 SP025	390	HF620-40.210 MS060	400	HF620-40.210 MS090-MS125	3,5
G 1"1/2	340	HF620-50.155 SP025	380	HF620-50.155 MS060	390	HF620-50.155 MS090-MS125	5,3
G 1"1/2	360	HF620-50.210 SP025	390	HF620-50.210 MS060	400	HF620-50.210 MS090-MS125	5,4