

Hydraulikventile

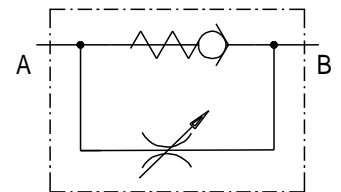
VRFC – Drossel-Rückschlagventil

Material: Stahl galvanisiert

Hydraulic valves

*VRFC – adjustable
throttle check valve*

material: steel galvanized



einseitig drosselnd / *unidirectional*
Leitungseinbau / *inline mounting*

| Bestell-Nr. code | Typ type | Gewinde thread | Q max. l/min | P max. bar | kg |
|---------------------|-------------|-------------------|-----------------|---------------|------|
| 210-080-01000 | VRFC010 | 1/4" | 25 | 350 | 0,30 |
| 210-080-01050 | VRFC020 | 3/8" | 45 | 350 | 0,48 |
| 210-080-01100 | VRFC030 | 1/2" | 70 | 350 | 0,59 |
| 210-080-01150 | VRFC040 | 3/4" | 110 | 300 | 1,34 |
| 210-080-01200 | VRFC050 | 1" | 160 | 250 | 2,15 |
| 210-080-01250 | VRFC060 | 1.1/4" | 210 | 230 | 3,31 |
| 210-080-01300 | VRFC070 | 1.1/2" | 280 | 230 | 4,76 |

210-080