

Rohrleitungsventile – Druckbegrenzungsventil direktgesteuert –



Bestellnr.	Typ	Bezeichnung	max. Betriebsdruck bar	max. Durchfluss l/min	Code
230-0050-0435	VMP/B/L 20-34/TB.S	3/4"-Einstellb. 5-40bar-Hutmutter	210	100	1111041100
230-0050-0440	VMP/B/L 20-34/TB.V	3/4"-Einstellb. 5-40bar-Handrad	210	100	1111041101
230-0050-0445	VMP/B/L 20-34/TV.S	3/4"-Einstellb. 20-80bar-Hutmutter	210	100	1111041102
230-0050-0450	VMP/B/L 20-34/TV.V	3/4"-Einstellb. 20-80bar-Handrad	210	100	1111041103
230-0050-0455	VMP/B/L 20-34/TS.S	3/4"-Einstellb. 50-220bar-Hutmutter	210	100	1111041104
230-0050-0460	VMP/B/L 20-34/TS.V	3/4"-Einstellb. 50-220bar-Handrad	210	100	1111041105
230-0050-0465	VMP/B/L 20-34/TR.S	3/4"-Einstellb. 180-350bar-Hutmutter	210	100	1111041106
230-0050-0470	VMP/B/L 20-34/TR.V	3/4"-Einstellb. 180-350bar-Handrad	210	100	1111041107
230-0050-0475	VMP/B/L 20-100/TB.S	1"-Einstellb. 5-40bar-Hutmutter	210	100	1111041150
230-0050-0480	VMP/B/L 20-100/TB.V	1"-Einstellb. 5-40bar-Handrad	210	100	1111041151
230-0050-0485	VMP/B/L 20-100/TV.S	1"-Einstellb. 20-80bar-Hutmutter	210	100	1111041152
230-0050-0490	VMP/B/L 20-100/TV.V	1"-Einstellb. 20-80bar-Handrad	210	100	1111041153
230-0050-0495	VMP/B/L 20-100/TS.S	1"-Einstellb. 50-220bar-Hutmutter	210	100	1111041154
230-0050-0500	VMP/B/L 20-100/TS.V	1"-Einstellb. 50-220bar-Handrad	210	100	1111041155
230-0050-0505	VMP/B/L 20-100/TR.S	1"-Einstellb. 180-350bar-Hutmutter	210	100	1111041156
230-0050-0510	VMP/B/L 20-100/TR.V	1"-Einstellb. 180-350bar-Handrad	210	100	1111041157
230-0050-0515	VMP/B/L 20-34/TR.S/ac	3/4"-Einstellb. 180-350bar-Hutmutter	350	100	1111042101
230-0050-0520	VMP/B/L 20-34/TS.S/ac	3/4"-Einstellb. 50-220bar-Hutmutter	350	100	1111042102
230-0050-0525	VMP/B/L 20-34/TR.V/ac	3/4"-Einstellb. 180-350bar-Handrad	350	100	1111042103
230-0050-0530	VMP/B/L 20-34/TS.V/ac	3/4"-Einstellb. 50-220bar-Handrad	350	100	1111042104
230-0050-0535	VMP/B/L 20-34/TB.S/ac	3/4"-Einstellb. 5-40bar-Hutmutter	350	100	1111042108
230-0050-0540	VMP/B/L 20-100/TS.S/ac	1"-Einstellb. 50-220bar-Hutmutter	350	100	1111042150
230-0050-0545	VMP/B/L 20-100/TR.S/ac	1"-Einstellb. 180-350bar-Hutmutter	350	100	1111042151
230-0050-0550	VMP/B/L 20-100/TS.V/ac	1"-Einstellb. 50-220bar-Handrad	350	100	1111042154
230-0050-0555	VMP/B/L 20-100/TR.V/ac	1"-Einstellb. 180-350bar-Handrad	350	100	1111042155

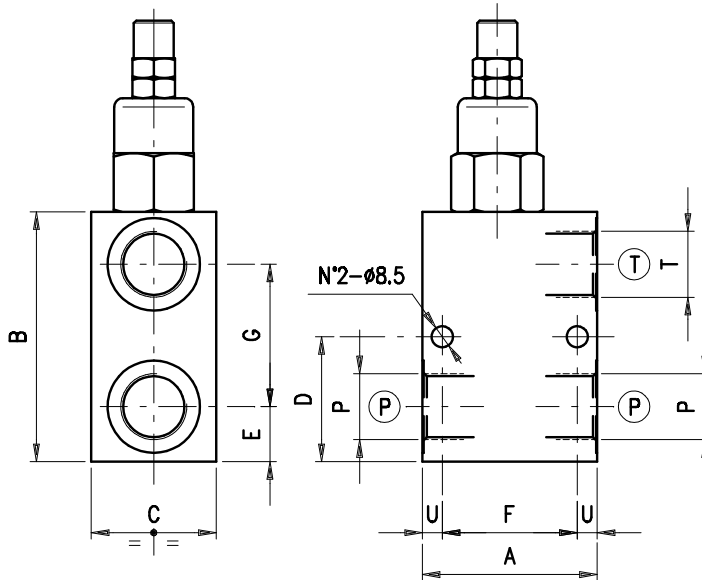
– Druckbegrenzungsventil –

direktgesteuert

230-0050

PRESSURE RELIEF VALVES
VMP /B /L 20 -

• DIMENSIONS (mm)



VMP/B/L 20	A	B	C	D	E	F	G	P	T	U
34	70	100	50	50	22	54	57	G3/4	G3/4	8
100	85	120	60	63	30	65	65	G 1"	G 1"	10

• DESCRIPTION

Direct acting, poppet type.

• OPERATION

Allows oil flow from P to T when pressure in P reaches the setting of the spring.

• PERFORMANCE

Maximum flow: 100 l/min.

Maximum Pressure:

- 210 bar (aluminium valve)
- 350 bar (steel valve)

Application range with standard springs:

- 5 ÷ 40 bar (test setting: 30 bar at 5 l/min.)
- 20 ÷ 80 bar (test setting: 60 bar at 5 l/min.)
- 50 ÷ 220 bar (test setting: 160 bar at 5 l/min.)
- 180 ÷ 350 bar (test setting: 280 bar at 5 l/min.)

To perform setting of the valve see the pressure drop/ flow diagram.

Hysteresis: 85% of the setting value for flow capacity 1 l/min.

Oil leaks from P to T: disregarable.

Working temperature:

- min. -25°C max. 90°C with standard BUNA N gaskets
- min. -20°C max. 120°C with optional VITON gaskets

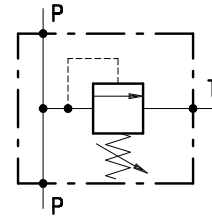
• RECOMMENDATIONS

Fluid: best use mineral oil with viscosity ranging between 10 and 200 cSt.

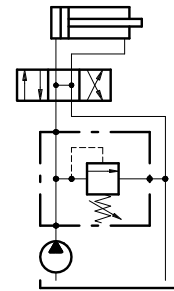
Filter: see page Z.9000.000.

OLEOSTAR S.p.A. – Reggio Emilia ITALY

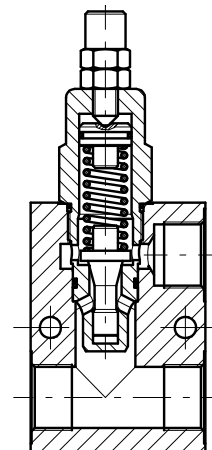
• HYDRAULIC DIAGRAM



• ASSEMBLY DIAGRAM



• CROSS SECTION



Weight:

- 1.70 kg and 2.31 kg (for aluminium valves model VMP/B/L 20-34 and VMP/B/L 20-100 respectively)
- 2.91 kg and 5.20 kg (for aluminium valves model VMP/B/L 20-34 and VMP/B/L 20-100 respectively)

Cartridges: see page 1.1000.300.

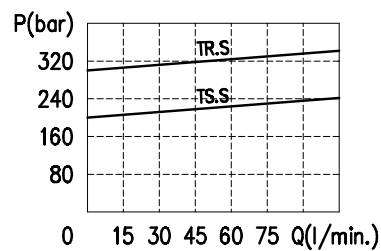
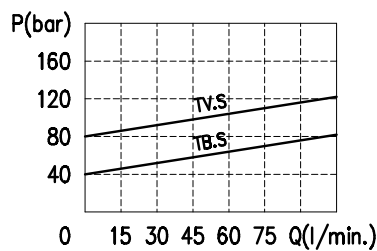
Material: internal components made out of high-grade steel duly treated and fabricated.

For more information please ask our technical office .

Variations and modifications of technical features and dimensions are reserved. **OLEOSTAR S.p.A.** also reserves the right to stop production of each and any model listed in the catalogue with no notice.

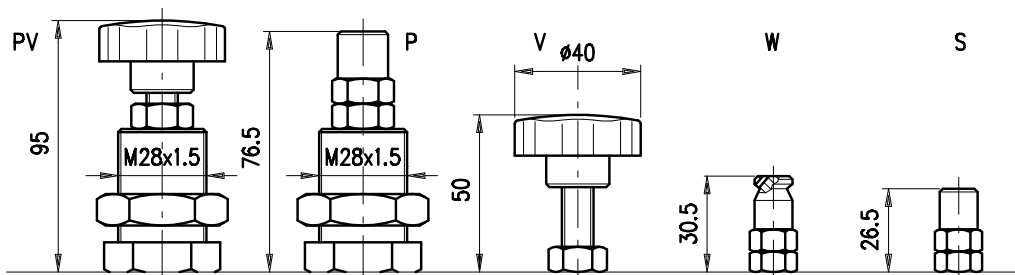
Copyrights on the text contained herein belong to **OLEOSTAR S.p.A.** . Partial and full reproductions or copies of this catalogue are forbidden.

RATING DIAGRAMS



Oil viscosity 46 cSt

ADJUSTMENTS



CODE NUMBER

VMP /B /L 20 -

Port size	Pressure settings (bar)	Adjustment	Body material
34) 3/4" BSP	TB) 5÷40	S	_Aluminium
100) 1" BSP	TV) 20÷80	V	ac Steel
	TS) 50÷220	W	
	TR) 180÷350	P	
		PV	

230-0050