

## Rohrleitungsventile – Druckfolgeventil direktgesteuert –

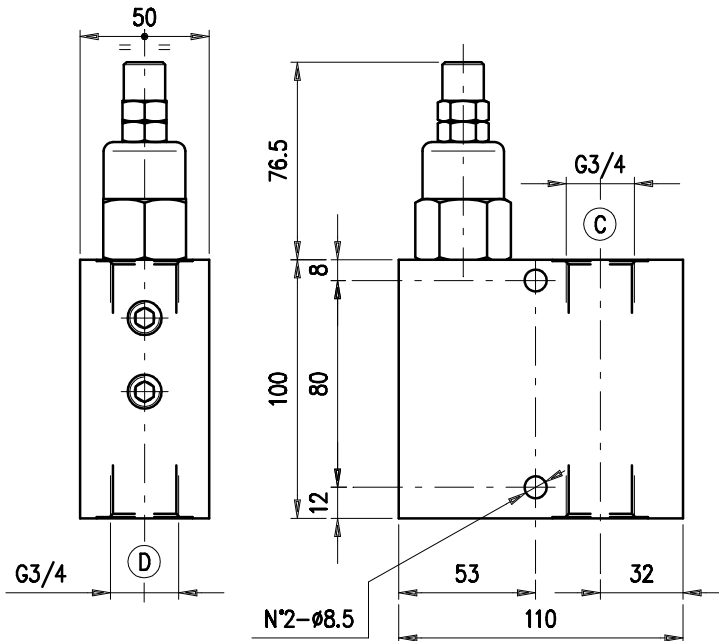


	Bestellnr.	Typ	Bezeichnung	Gehäuse	max. Betriebsdruck bar	max. Durchfluss l/min	Code
direktgesteuert	230-0260-1220	VDSRL 20-34/TB.S	3/4"-Einstellb. 5-40bar-Hutmutter	Alu	210	120	1200041100
	230-0260-1225	VDSRL 20-34/TV.S	3/4"-Einstellb. 20-80bar-Hutmutter				1200041101
	230-0260-1230	VDSRL 20-34/TS.S	3/4"-Einstellb. 50-220bar-Hutmutter				1200041102
	230-0260-1235	VDSRL 20-34/TR.S	3/4"-Einstellb. 180-350bar-Hutmutter				1200041103
	230-0260-1240	VDSRL 20-34/TS.V	3/4"-Einstellb. 50-220bar-Handrad				1200041104
	230-0260-1245	VDSRL 20-34/TV.V	3/4"-Einstellb. 20-80bar-Handrad				1200041107
	230-0260-1250	VDSRL 20-34/TB.V	3/4"-Einstellb. 5-40bar-Handrad				1200041108
	230-0260-1255	VDSRL 20-34/TR.V	3/4"-Einstellb. 180-350bar-Handrad				1200041111
	230-0260-1260	VDSRL 20-34/TS.S/ac	3/4"-Einstellb. 50-220bar-Hutmutter	Stahl	350	120	1200042100
	230-0260-1265	VDSRL 20-34/TR.S/ac	3/4"-Einstellb. 180-350bar-Hutmutter				1200042101

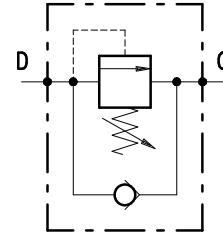
230-0260

SEQUENCE  
VDSRL 20 - 34

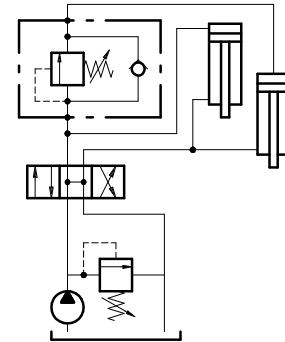
• DIMENSIONS (mm)



• HYDRAULIC DIAGRAM



• ASSEMBLY DIAGRAM



• DESCRIPTION

Direct control sequence valve.

• OPERATION

Allows for oil flow from D into C when the pressure in D achieves the spring setting value. Should back pressure arise in C, the valve opening pressure shall be same as the setting pressure plus the back pressure.

• PERFORMANCE

**Maximum flow:** 120 l/min.

**Maximum Pressure:**

- 210 bar (aluminium valve)

- 350 bar (steel valve)

**Application range with standard springs:**

- 5 ÷ 40 bar (test setting: 30 bar at 5 l/min.)

- 20 ÷ 80 bar (test setting: 60 bar at 5 l/min.)

- 50 ÷ 220 bar (test setting: 160 bar at 5 l/min.)

- 180 ÷ 350 bar (test setting: 280 bar at 5 l/min.)

To perform setting of the valve see the pressure drop/ flow diagram.

**Working temperature:**

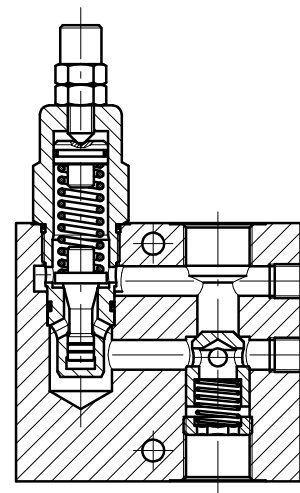
- min. -25°C max. 90°C with standard BUNA N gaskets

- min. -20°C max. 120°C with optional VITON gaskets

• RECOMMENDATIONS

**Fluid:** best use mineral oil with viscosity ranging between 10 and 200 cSt.

**Filter:** see page Z.9000.000.



**Weight:** 1.80 kg and 4.00 kg for aluminium and steel valves respectively.

**Cartridge used:** see page 1.1000.300.

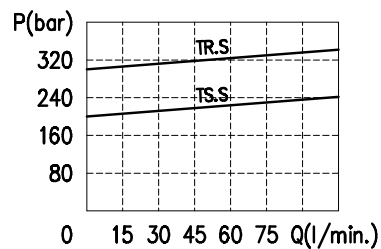
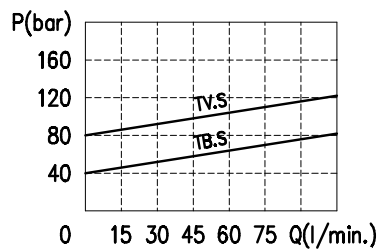
**Material:** internal components made out of high-grade steel duly treated and fabricated.

For more information please ask our technical office.

Variations and modifications of technical features and dimensions are reserved. **OLEOSTAR S.p.A.** also reserves the right to stop production of each and any model listed in the catalogue with no notice.

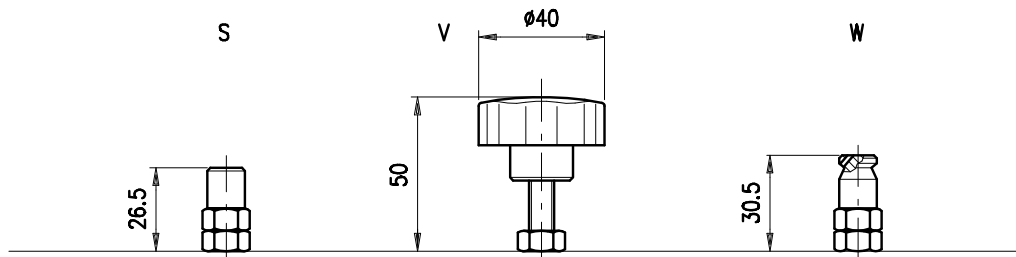
Copyrights on the text contained herein belong to **OLEOSTAR S.p.A.** . Partial and full reproductions or copies of this catalogue are forbidden.

• RATING DIAGRAMS



Oil viscosity 46 cSt

• ADJUSTMENTS



• CODE NUMBER

