

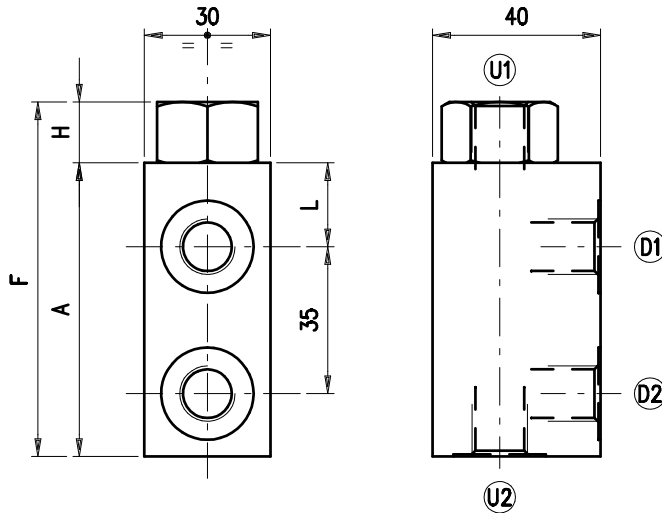
Entsperrbares Rückschlagventil – einfachwirkend G 1/4" und G 3/8" –



Bestellnr.	Typ	Bezeichnung	Gehäuse	max. Betriebsdruck bar	max. Durchfluss l/min	Code
230-0660-2415	VBPSL 14/p4	1/4"-Öffnungsverh.1:4,5	Alu	210	15	1410011100
230-0660-2420	VBPSL 14/p3	1/4"-Öffnungsverh.1:3				1410011105
230-0660-2430	VBPSL 14/p4/ac	1/4"-Öffnungsverh.1:4,5	Stahl	350		1410012100
230-0670-2425	VBPSL/VP 38/p4	3/8"-Öffnungsverh.1:4,5	Alu	210	25	1410011150
230-0670-2435	VBPSL/VP 38/p4/ac	3/8"-Öffnungsverh.1:4,5	Stahl	350		1410012150

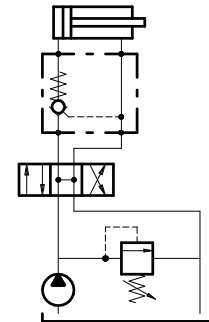
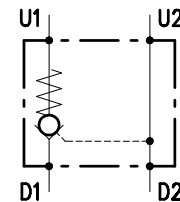
PILOT CHECK AND OVERCENTER VALVES
VBPSL 14 (/VP 38)

• DIMENSIONS (mm)



VBPSL	D1-D2	U1-U2	A	F	H	L
14	G 1/4	G 1/4	70	84.5	14.5	20
VP/38	G 3/8	G 3/8	80	99.5	19.5	22.5

• HYDRAULIC DIAGRAM



• DESCRIPTION

Pilot operated check valves, single acting, line mounting.

• OPERATION

Allows oil flow from D1 to U1 and stops it in the opposite way (from U1 to D1). Free oil flow from U1 to D1 is strictly possible when the pilot pressure in U2 and D2 is strong enough to open the valve poppet. To assert the minimum opening pressure divide the value of pressure in U1 by the pilot ratio. To provide best valve performance from U1 to D1 make sure that no counterpressure arises in D1.

• PERFORMANCE

Maximum flow:

- VBPSL 14=15l/min.
- VBPSL/VP 38=25l/min.

Maximum Pressure:

- 210 bar aluminium valve
- 350 bar steel valve

Oil leak from U1 to D1: 0,25 cc/minute (5 drops) at 210 bar.

Pilot ratio:

- 1:4.5 (standard version)
- 1:3 (on request)

Working temperature:

- min. -25°C max. 90°C with standard BUNA N gaskets
- min. -20°C max. 120°C with optional VITON gaskets

• RECOMMENDATIONS:

Fluid: best use mineral oil with viscosity ranging between 10 and 200 cSt.

Filter: see page Z.9000.000.

230-0660