

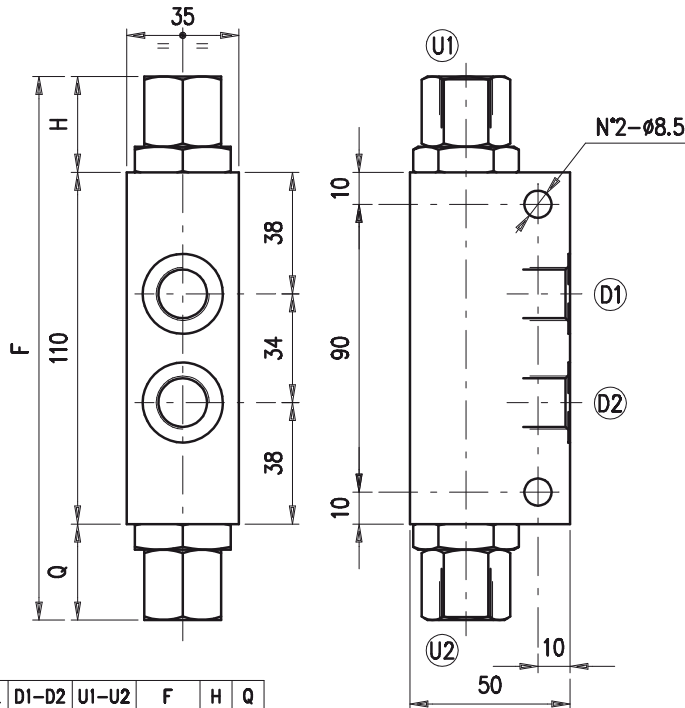
## Entsperrbares Rückschlagventil – doppelwirkend G 3/8" und G 1/2" –



Bestellnr.	Typ	Bezeichnung	Gehäuse	max. Betriebsdruck bar	max. Durchfluss l/min	Code
230-0790-2585	VBPDL/VP 38/p4/ac	3/8"-Öffnungsverh.1:4,5	Stahl	350	25	1420012150
230-0790-2590	VBPDL 38/p4	3/8"-Öffnungsverh.1:4,5	Alu	210	35	1420021100
230-0790-2595	VBPDL 38/p4/ac	3/8"-Öffnungsverh.1:4,5	Stahl	350	35	1420022100
230-0790-2600	VBPDL 12/p4	1/2"-Öffnungsverh.1:4,5	Alu	210	50	1420031100
230-0790-2605	VBPDL 12/p4/ac	1/2"-Öffnungsverh.1:4,5	Stahl	350	50	1420032100

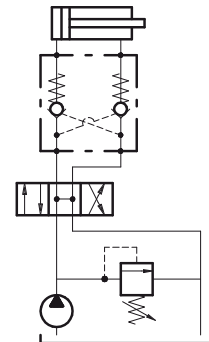
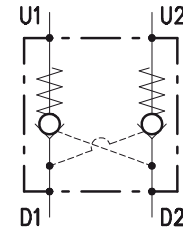
PILOT CHECK AND OVERCENTER VALVES  
**VBPDL 38 (12)**

• DIMENSIONS (mm)



VBPDL	D1-D2	U1-U2	F	H	Q
38	G 3/8	G 3/8	170	30	30
12	G 1/2	G 1/2	176	33	33

• HYDRAULIC DIAGRAM



• DESCRIPTION

Pilot operated check valves, double acting, line mounting.

• OPERATION

Allows oil flow from D1(D2) to U1 (U2) and stops it in the opposite way (from U1/U2 to D1/D2). Free oil flow from U1/U2 to D1/D2 is strictly possible when the pilot pressure in the opposite way is strong enough to open the valve poppet. To assert the minimum opening pressure divide the value of pressure in U1/U2 by the pilot ratio. To provide best valve performance from U1/U2 to D1/D2 make sure that no counterpressure arises in D1/D2.

• PERFORMANCE

**Maximum flow:**

- VBPD 38=35 l/min.
- VBPD 12=50 l/min.

**Maximum pressure:**

- 210 bar aluminium valve
- 350 bar steel valve

**Oil leak from U1/U2 to D1/D2:** 0,25 cc/minute (5 drops) at 210 bar.

**Pilot ratio:**

- 1:4 (standard)
- 1:6.3 (on request only)
- 1:7.5 (on request only)

**Working temperature:**

- min. -25°C max. 90°C with standard BUNAN gaskets
- min. -20°C max. 120°C with optional VITON gaskets

• RECOMMENDATIONS:

**Fluid:** best use mineral oil with viscosity ranging between 10 and 200 cSt.

230-0790