

Stromregelventil

– 3 Wege druckkompensiert, G 3/8" und G 1/2" –

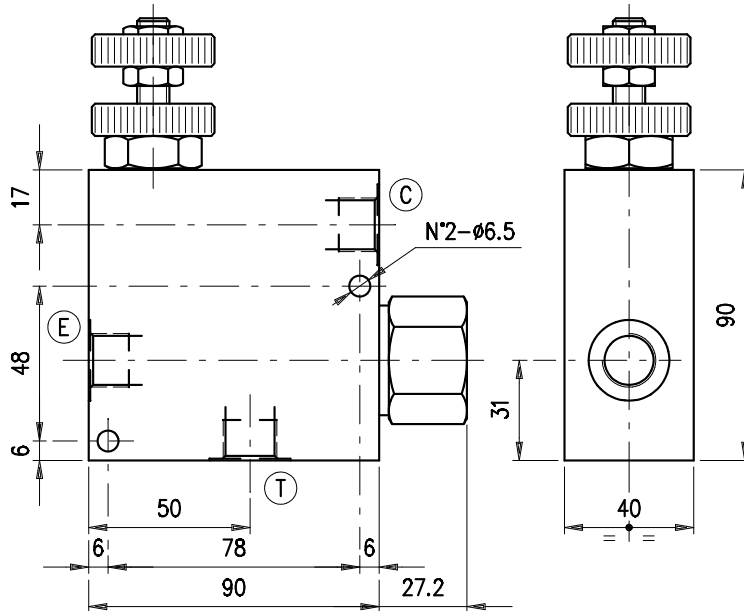


Bestellnr.	Typ	Bezeichnung	Gehäuse	max. Betriebsdruck bar	max. Durchfluss l/min	Code
230-1140-3470	VPR/3/ET 38/V	3/8"-Handrad	Alu	210	50/30	1620021100
230-1140-3475	VPR/3/ET 38/MG	3/8"-Skalenknauf				1620021101
230-1140-3480	VPR/3/ET 38/L	3/8"-Hebelverstellung				1620021102
230-1140-3485	VPR/3/ET 38/V/ac	3/8"-Handrad	Stahl	350		1620022100
230-1140-3490	VPR/3/ET 38/L/ac	3/8"-Hebelverstellung				1620022103
230-1140-3495	VPR/3/ET 38/V.SB/ac					1620022104
230-1140-3500	VPR/3/ET 38/MG/ac	3/8"-Skalenknauf			1620022106	
230-1140-3505	VPR/3/ET 12/V	1/2"-Handrad	Alu	210	90/50	1620031100
230-1140-3510	VPR/3/ET 12/MG	1/2"-Skalenknauf				1620031101
230-1140-3515	VPR/3/ET 12/L	1/2"-Hebelverstellung				1620031102
230-1140-3520	VPR/3/ET 12/V/ac	1/2"-Handrad	Stahl	350		1620032100
230-1140-3525	VPR/3/ET 12/MG/ac	1/2"-Skalenknauf				1620032101
230-1140-3530	VPR/3/ET 12/L/ac	1/2"-Hebelverstellung				1620032103

230-1140

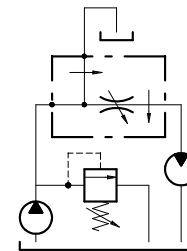
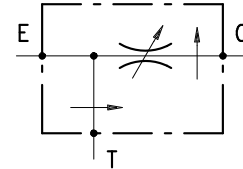
FLOW REGULATOR PRESSURE COMPENSATED
VPR /3 /ET 38 (12)

• DIMENSIONS (mm)



VPR/3/ET	E	T	C
38	G 3/8	G 3/8	G 3/8
12	G 1/2	G 1/2	G 1/2

• HYDRAULIC DIAGRAM



• DESCRIPTION

3-ways flow regulator, pressure compensated, exceeding flow to tank.

• OPERATION

The valve is designed to provide flow adjustment from E to C by a variation of the oil flow section. Exceeding flow is concurrently sent to tank T. Best performance of the valve is assured when the flow in E is at least 10% bigger than in C. Pressure variations in C do not alter the checked oil flow. On the contrary, eventual back pressure in T may cause inconstant capacity in C. Use of a pressure relief valve between the pump and the flow regulator is strictly recommended.

• PERFORMANCE

Maximum flow:

- VPR/3/ET 38: E = 50 l/min. C = 30 l/min.
- VPR/3/ET 12: E = 90 l/min. C = 50 l/min.

Maximum Pressure:

- Aluminium body: 210 bar
- Steel body: 350 bar

Maximum pressure compensation error: see performance graphs.

Working temperature:

- Minimum -25°C max 90°C with standard BUNA N gaskets
- Minimum -20°C max 120°C with VITON gaskets on request

• RECOMMENDATIONS

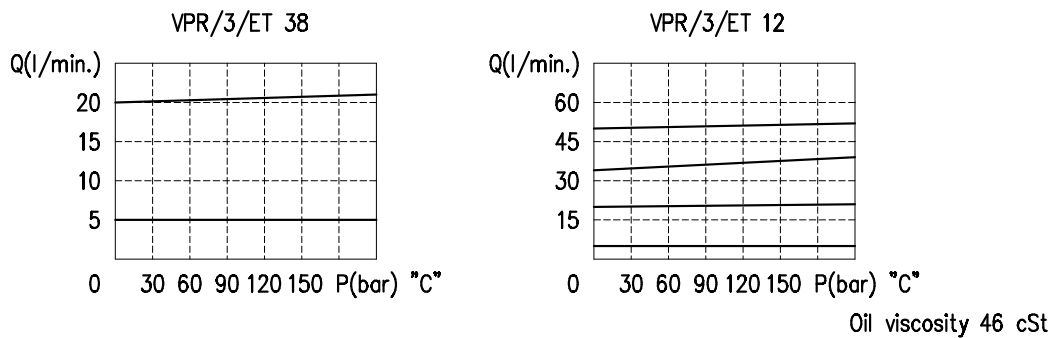
Fluid: best use mineral oil with viscosity ranging between 10 and 200 cSt

Filter: see page Z.9000.000.

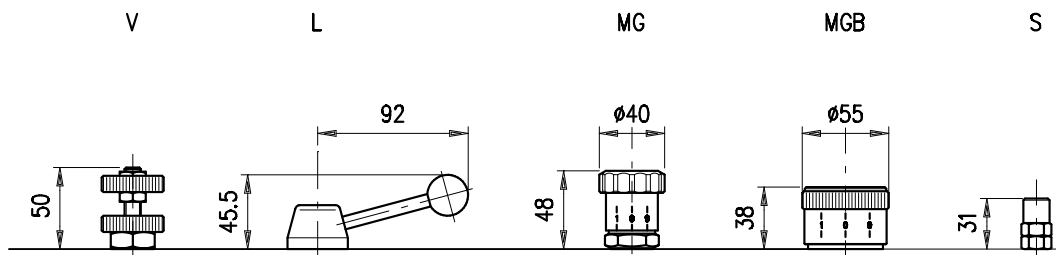
Weight:

- VPR/3/ET 38: aluminium body 1.07 kg - steel body 2.48 kg

• RATING DIAGRAMS



• ADJUSTMENTS



• CODE NUMBER

