

Stromregelventil

– 3 Wege druckkompensiert, mit Druckbegrenzungsventil G 3/8" –

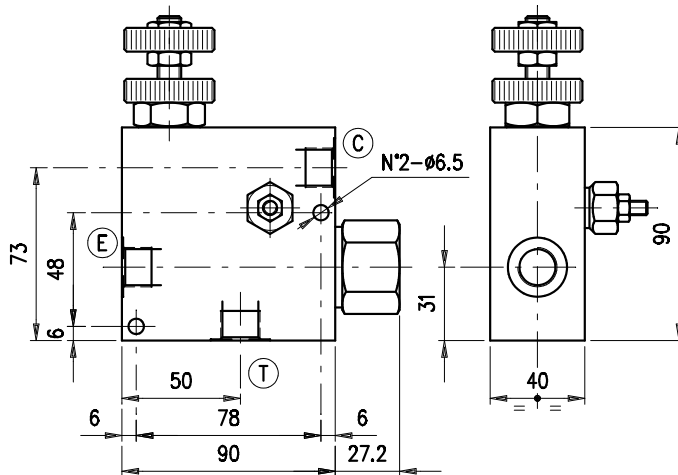


Bestellnr.	Typ	Bezeichnung	Gehäuse	max. Betriebsdruck bar	max. Durchfluss l/min	Code
230-1200-3700	VPR/3/ET/VMP 38/V/02.TS	3/8"-EB: 50-220bar-Handrad	Alu	210	50/30	1623021100
230-1200-3705	VPR/3/ET/VMP 38/MG/02.TS	3/8"-EB: 50-220bar-Skalenknauf				1623021101
230-1200-3710	VPR/3/ET/VMP 38/L/02.TS	3/8"-EB: 50-220bar-Hebelv.				1623021102
230-1200-3715	VPR/3/ET/VMP 38/V/02.TV	3/8"-EB: 5-80bar-Handrad				1623021105
230-1200-3720	VPR/3/ET/VMP 38/S/02.TS	3/8"-EB: 50-220bar-Hutmutter				1623021107
230-1200-3725	VPR/3/ET/VMP 38/V/02.TS/ac	3/8"-EB: 50-220bar-Handrad	Stahl	350	50/30	1623022100
230-1200-3730	VPR/3/ET/VMP 38/V/02.TR/ac	3/8"-EB: 180-350bar-Handrad				1623022101
230-1200-3735	VPR/3/ET/VMP 12/V/02.TS	1/2"-EB: 50-220bar-Handrad	Alu	210	90/50	1623031100
230-1200-3740	VPR/3/ET/VMP 12/MG/02.TS	1/2"-EB: 50-220bar-Skalenknauf				1623031101
230-1200-3745	VPR/3/ET/VMP 12/L/02.TS	1/2"-EB: 50-220bar-Hebelv.				1623031102
230-1200-3750	VPR/3/ET/VMP 12/L/02.TV	1/2"-EB: 5-80bar-Hebelv.				1623031103
230-1200-3755	VPR/3/ET/VMP 12/V/02.TB	1/2"-EB: 5-40bar-Handrad				1623031111
230-1200-3760	VPR/3/ET/VMP 12/V/02.TS/ac	1/2"-EB: 50-220bar-Handrad	Stahl	350	90/50	1623032100
230-1200-3765	VPR/3/ET/VMP 12/MG/02.TS/ac	1/2"-EB: 50-220bar-Skalenknauf				1623032101
230-1200-3770	VPR/3/ET/VMP 12/V/02.TR/ac	1/2"-EB: 180-350bar-Handrad				1623032104

230-1200

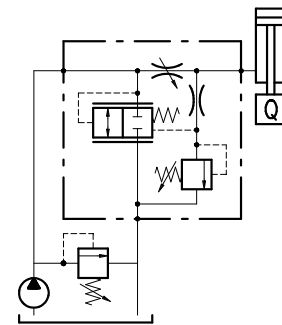
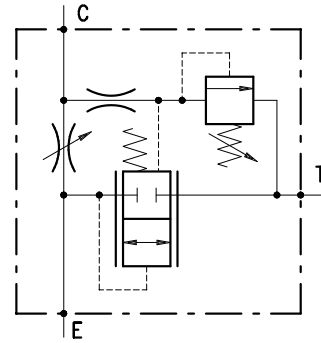
FLOW REGULATOR PRESSURE COMPENSATED
VPR /3 /ET /VMP 38 (12)

• DIMENSIONS (mm)



VPR/3/ET/VMP	E	T	C
38	G 3/8	G 3/8	G 3/8
12	G 1/2	G 1/2	G 1/2

• HYDRAULIC DIAGRAM



• DESCRIPTION

3-ways flow regulator, pressure compensated, with built-in relief valve on the checked way and exceeding flow to tank

• OPERATION

The valve is designed to provide flow adjustment from E to C by a variation of the oil flow section. Exceeding flow is concurrently discharged in T while a pressure built-in relief valve provides operative pressure control in C. Best performance of the valve is assured when the flow in E is at least 10% bigger than in C. Pressure variations in C do not alter the checked oil flow. On the contrary, eventual back pressure in T may cause inconstant capacity in conto

• PERFORMANCE

Maximum flow:

- VPR/3/ET/VMP 38: E = 50 l/min. C = 30 l/min.
- VPR/3/ET/VMP 12: E = 90 l/min. C = 50 l/min.

Maximum Pressure:

- Aluminium body: 210 bar
- Steel body: 350 bar

Maximum pressure compensation error: see performance graphs.

Working temperature:

- Minimum -25°C max 90°C with standard BUNA N gaskets
- Minimum -20°C max 120°C with VITON gaskets on request

• RECOMMENDATIONS

Fluid: best use mineral oil with viscosity ranging between 10 and 200 cSt

Filter: see page Z.9000.000.

Weight:

- VPR/3/ET/VMP 38: aluminium body 1.10 kg - steel body 2.31 kg

- VPR/3/ET/RL 12: aluminium body 1.20 kg - steel body 2.42 kg

Relief cartridge valve: see page 1.1000.000.

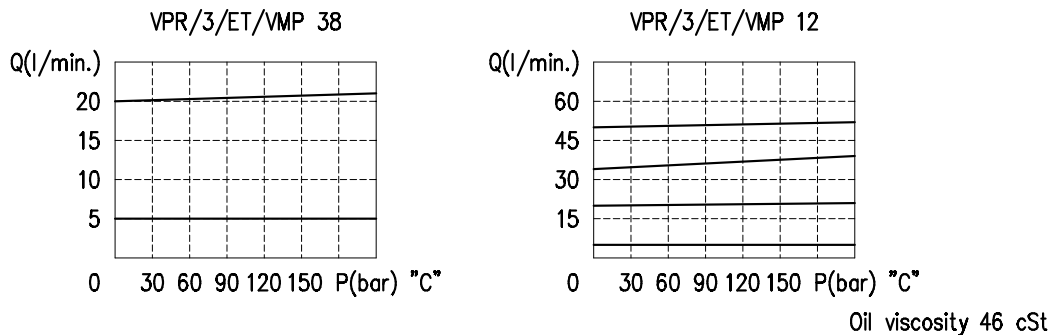
Material: internal components made out of high-grade steel duly treated and fabricated.

For more information please ask our technical office.

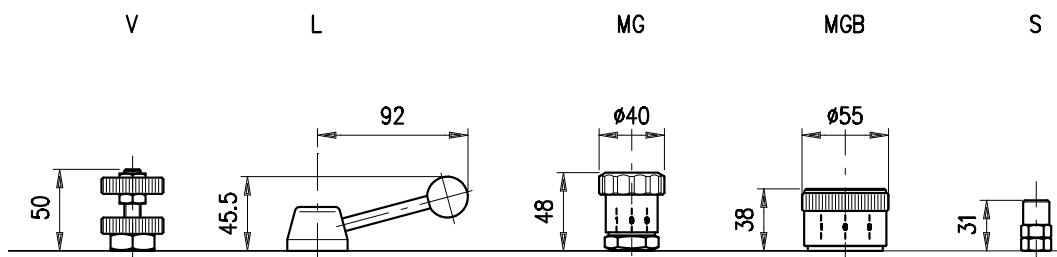
Variations and modifications of technical features and dimensions are reserved. **OLEOSTAR S.p.A.** also reserves the right to stop production of each and any model listed in the catalogue with no notice.

Copyrights on the text contained herein belong to **OLEOSTAR S.p.A.** . Partial and full reproductions or copies of this catalogue are forbidden.

• RATING DIAGRAMS



• ADJUSTMENTS



• CODE NUMBER

