

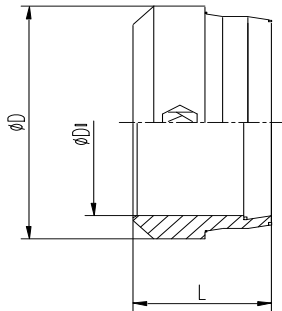
# DPR Progressive Ring / D Cutting Ring

## Y Schneidring - YO Schneidring mit O-Ring

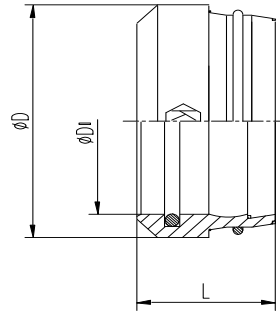
**Order code**  
Y....(101...)

**Order code**  
YO....(105...)

**Typ A**



**Typ B**



Series	Tube	D1	TYP A				TYP B			
	ØD1		D	L	ITEM CODE	ITEM NAME	D	L	ITEM CODE	ITEM NAME
	Rohr ØD1				PREMOEM NR.:	Bezeichnung			PREMOEM NR.:	Bezeichnung
LL DB	6	6	8	7	101100600	Y6DB	8	7	105100600	YO6DB
	8	8	10	7	101100800	Y8DB	10	7	105100800	YO8DB
	10	10	12	7	101101000	Y10DB	12	7	105101000	YO10DB
	12	12	14	7.5	101101200	Y12DB	14	7.5	105101200	YO12DB
L/S NB/YB	6	6	10	9.5	101200600	Y6NB/YB	10	9.5	105200600	YO6NB/YB
	8	8	12	9.5	101200800	Y8NB/YB	12	9.5	105200800	YO8NB/YB
	10	10	14	10	101201000	Y10NB/YB	14	10	105201000	YO10NB/YB
	12	12	16	10	101201200	Y12NB/YB	16	10	105201200	YO12NB/YB
L NB	15	15	19	10	101201500	Y15NB	19	10	105201500	YO15NB
	18	18	23	10	101201800	Y18NB	23	10	105201800	YO18NB
	22	22	27	11.5	101202200	Y22NB	27	11.5	105202200	YO22NB
	28	28	33	11.5	101202800	Y28NB	33	11.5	105202800	YO28NB
	35	35	41	13.5	101203500	Y35NB	41	13.5	105203500	YO35NB
	42	42	48	13.5	101204200	Y42NB	48	13.5	105204200	YO42NB
S YB	14	14	19	10.5	101301400	Y14YB	19	10.5	105301400	YO14YB
	16	16	21	10.55	101301600	Y16YB	21	10.55	105301600	YO16YB
	20	20	26	12.5	101302000	Y20YB	26	12.5	105302000	YO20YB
	25	25	31	12.5	101302500	Y25YB	31	12.5	105302500	YO25YB
	30	30	36	13.5	101303000	Y30YB	36	13.5	105303000	YO30YB
	38	38	44	13.5	101303800	Y38YB	44	13.5	105303800	YO38YB

LL= very light series

L= light series

S= heavy series

$\frac{\text{PN (bar)}}{10} = \text{PN (MPa)}$

10

Zinc plated=Cr(VI)-free

