



Variable displacement axial piston pumps, for open circuit.



DISPLACEMENTS

From	29 cm ³ /rev
To	73 cm ³ /rev

MAX. SPEED

3000 min⁻¹

PRESSURE

Max. continuous	280 bar
Max. intermittent	315 bar
Max. peak	350 bar

APPLICATION

Medium, high pressure

SECTOR

Mobil / Industrial

- Energy savings.
- Low noise emission.
- Operational flexibility.
- Short response time.
- Drive shaft bearing suitable for radial and axial loads.

PLATA pumps meet these requirements in every way. The variable displacement axial piston pump is the optimal solution for open circuit applications. PLATA pumps are available with a wide range of control options. The pump is designed for both radial and axial loads, and supports full torque transmission in multiple body configurations.



MULTIPLE PUMPS

Through drive

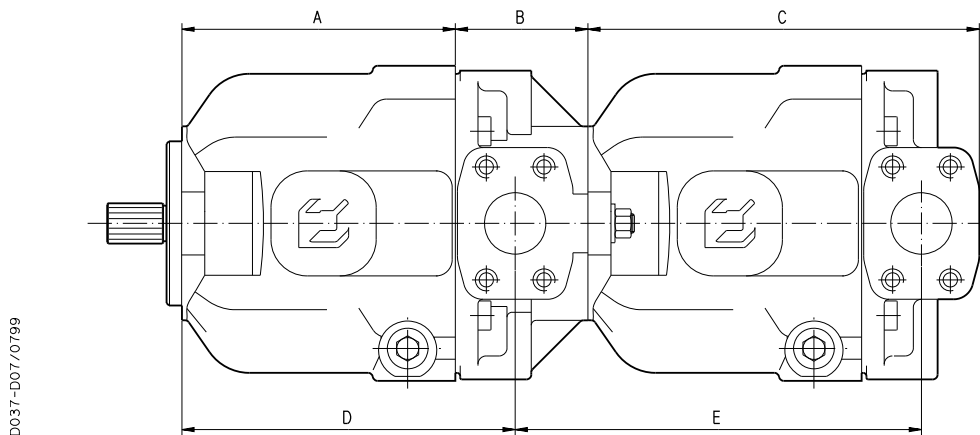
PLATA 3000 through drive axial piston pumps offer the flexibility to obtain different groups able to supply several hydraulic systems. The operating characteristics of each assembled pumps are the same as the corresponding single pumps according to the following conditions:

- 1) Do not exceed the maximum transmissible torque.
- 2) The maximum rotational speed is that of the lowest rated speed of the single unit incorporated.

M	[Nm]	Torque
V	[cm ³ /rev]	Displacement
Δp	[bar]	Pressure
$\eta_m = \eta_m(V, \Delta p, n)$		Mechanical efficiency

$$M = \frac{\Delta p \cdot V}{62,83 \cdot \eta_m} \quad [\text{Nm}]$$

Notes: The torque absorbed from the shaft of the first pump results from the sum of the torques due to all single stages. The achieved value must not exceed the maximum torque limit given for the shaft of the first pump.



Pump type	A		B		C	D	E
	mm (in)	mm (in)	Flanged for	Code			
LVP 30	145 (5.709)	77 (3.031)	SAE A	AS1	213 (8.386)	183 (7.205)	222 (8.740)
			SAE B	AS5			
LVP 48	169 (6.654)	82 (3.228)	SAE A	AS1	242 (9.528)	206 (8.110)	251 (9.882)
			SAE B	AS5			
LVP 75	192 (7.559)	99 (3.898)	SAE A	AS1	276 (10.866)	235 (9.252)	291 (11.445)
			SAE B	AS5			296 (11.654)
			SAE C	AS7			

Overall dimensions: the same as the single pumps.
Ports dimensions on page 12. - Screws are supplied with the first pump.

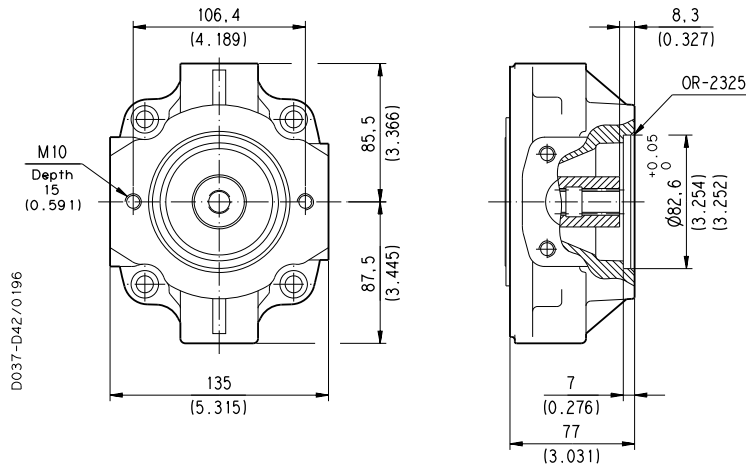
INTERMEDIATE FLANGES

LVP 30

SAE "A" 2 HOLES

AS1

SAE J744 Jul88



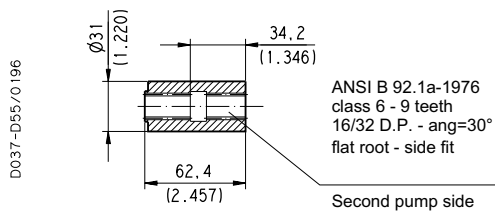
COUPLINGS

LVP 30

SAE "A" SPLINE

03

Available with flange code **AS1**

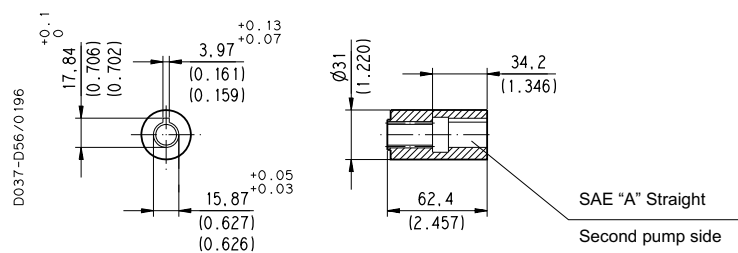


MAX 100 Nm (885 lbf in)

SAE "A" STRAIGHT

31

Available with flange code **AS1**



MAX 60 Nm (531 lbf in)



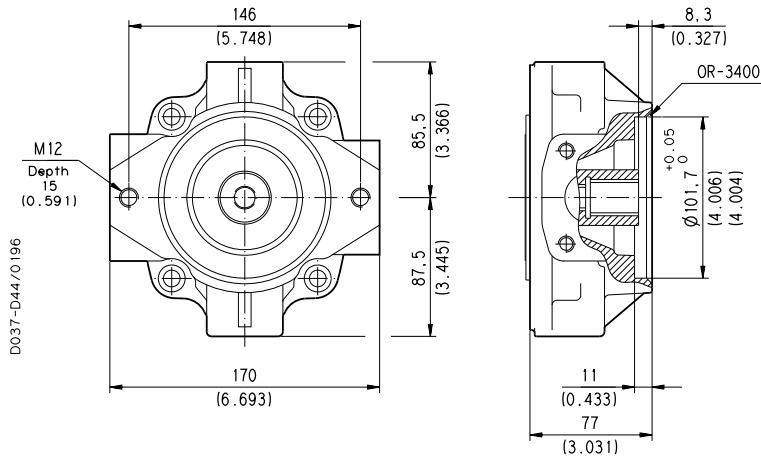
INTERMEDIATE FLANGES

LVP 30

SAE "B" 2 HOLES

AS5

SAE J744 Jul88



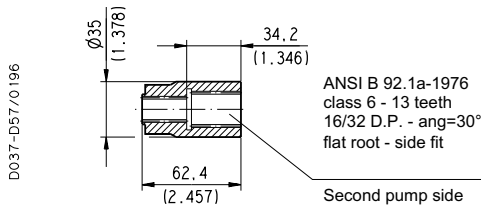
COUPLINGS

LVP 30

SAE "B" SPLINE

04

Available with flange code **AS5**

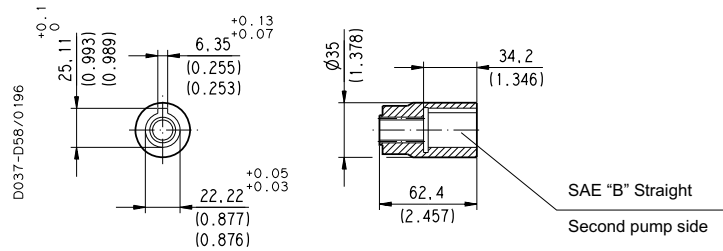


MAX 135 Nm (1195 lbf in)

SAE "B" STRAIGHT

32

Available with flange code **AS5**



MAX 145 Nm (1283 lbf in)

060-050

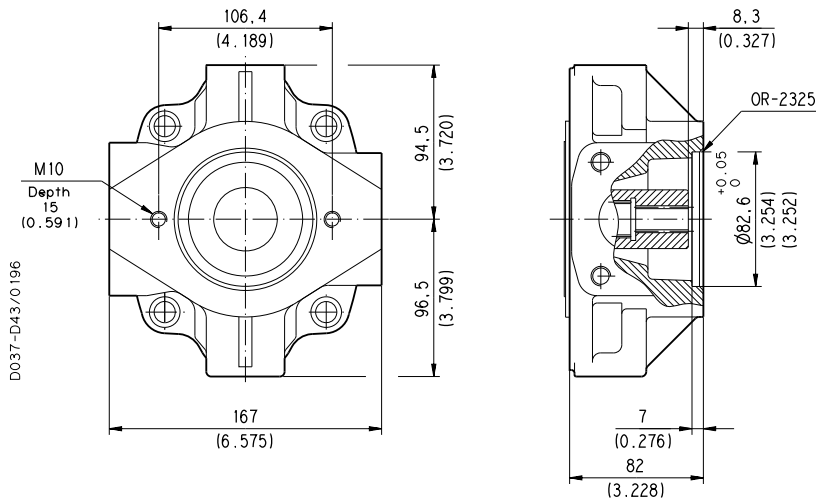
INTERMEDIATE FLANGES

LVP 48

SAE "A" 2 HOLES

AS1

SAE J744 Jul88



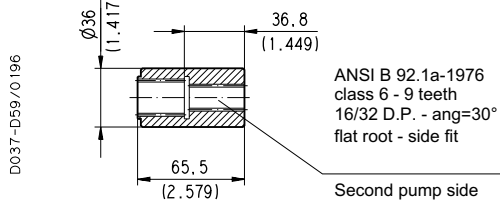
COUPLINGS

LVP 48

SAE "A" SPLINE

03

Available with flange code **AS1**

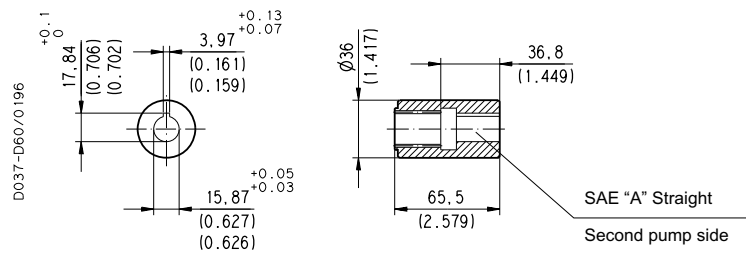


MAX 135 Nm (1195 lbf in)

SAE "A" STRAIGHT

31

Available with flange code **AS1**



MAX 60 Nm (531 lbf in)



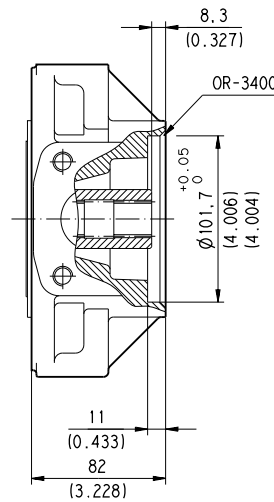
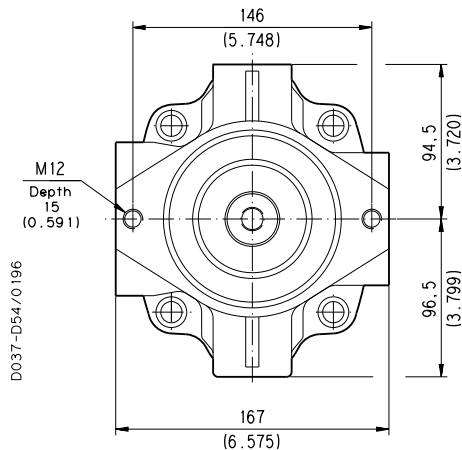
INTERMEDIATE FLANGES

LVP 48

SAE "B" 2 HOLES

AS5

SAE J744 Jul88



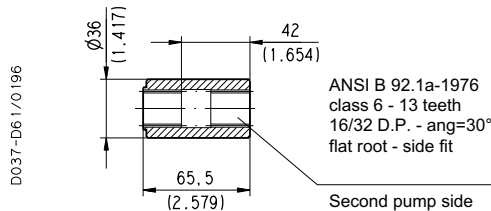
COUPLINGS

LVP 48

SAE "B" SPLINE

04

Available with flange code **AS5**

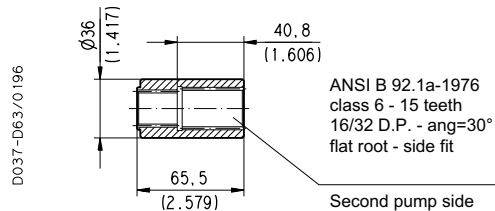


MAX 250 Nm (2213 lbf in)

SAE "BB" SPLINE

05

Available with flange code **AS5**

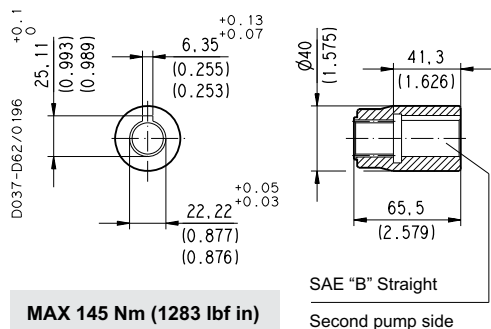


MAX 250 Nm (2213 lbf in)

SAE "B" STRAIGHT

32

Available with flange code **AS5**

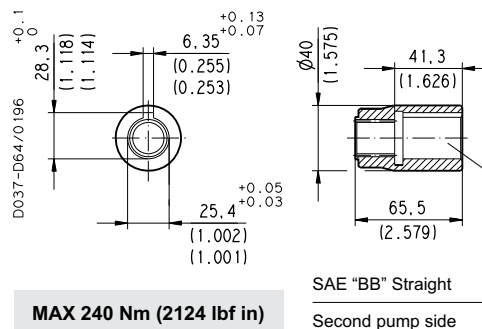


MAX 145 Nm (1283 lbf in)

SAE "BB" STRAIGHT

33

Available with flange code **AS5**



MAX 240 Nm (2124 lbf in)

060-050

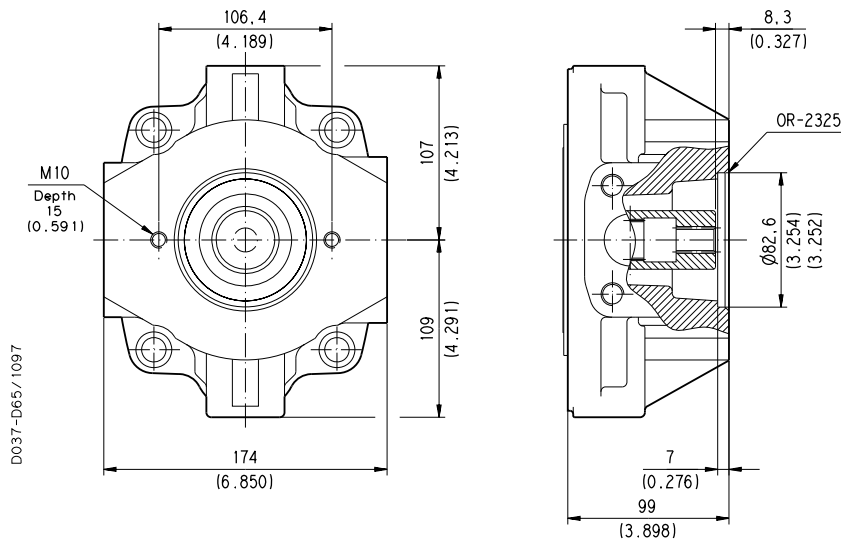
INTERMEDIATE FLANGES

LVP 75

SAE "A" 2 HOLES

AS1

SAE J744 Jul88



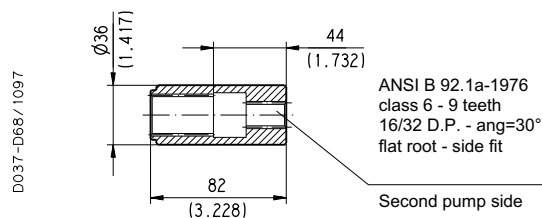
COUPLINGS

LVP 75

SAE "A" SPLINE

03

Available with flange code **AS1**

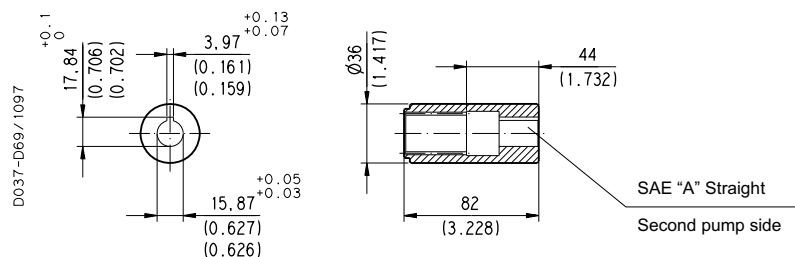


MAX 135 Nm (1195 lbf in)

SAE "A" STRAIGHT

31

Available with flange code **AS1**



MAX 60 Nm (531 lbf in)

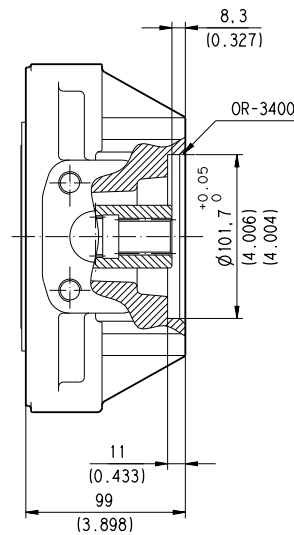
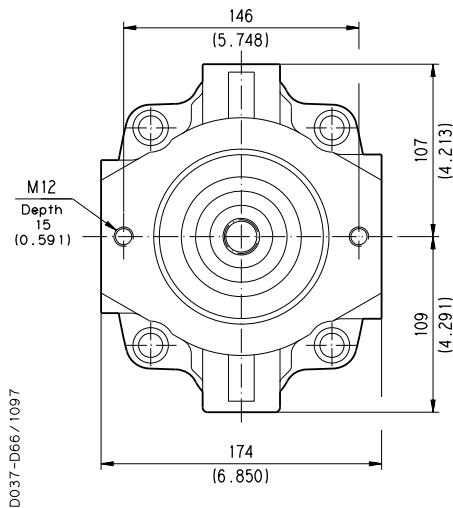
INTERMEDIATE FLANGES

LVP 75

SAE "B" 2 HOLES

AS5

SAE J744 Jul88



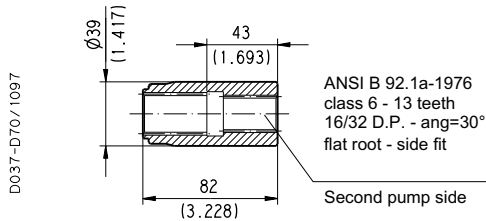
COUPLINGS

LVP 75

SAE "B" SPLINE

04

Available with flange code **AS5**

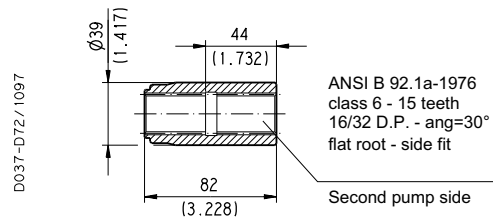


MAX 330 Nm (2921 lbf in)

SAE "BB" SPLINE

05

Available with flange code **AS5**

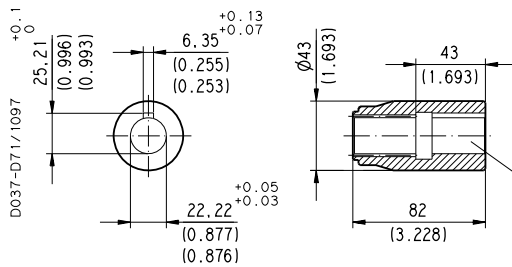


MAX 400 Nm (3540 lbf in)

SAE "B" STRAIGHT

32

Available with flange code **AS5**

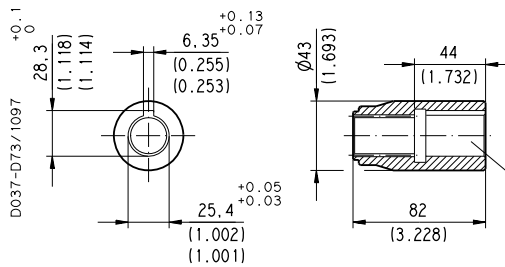


MAX 145 Nm (1283 lbf in)

SAE "BB" STRAIGHT

33

Available with flange code **AS5**



MAX 240 Nm (2124 lbf in)

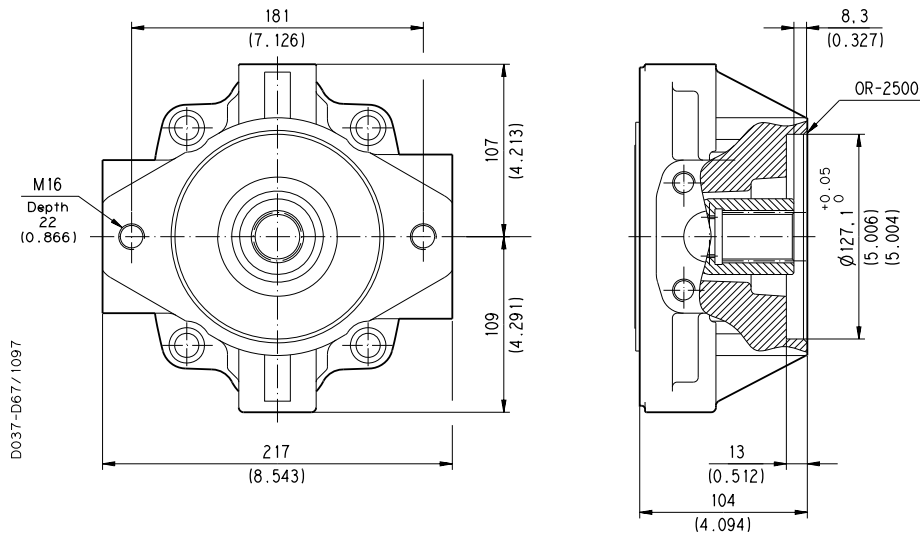
INTERMEDIATE FLANGES

LVP 75

SAE "C" 2 HOLES

AS7

SAE J744 Jul88



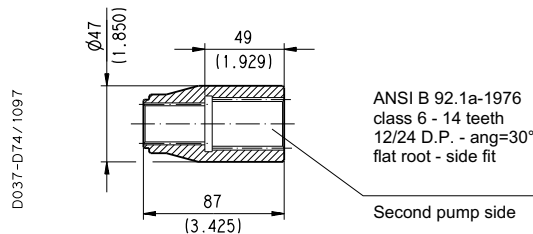
COUPLINGS

LVP 75

SAE "C" SPLINE

06

Available with flange code **AS7**

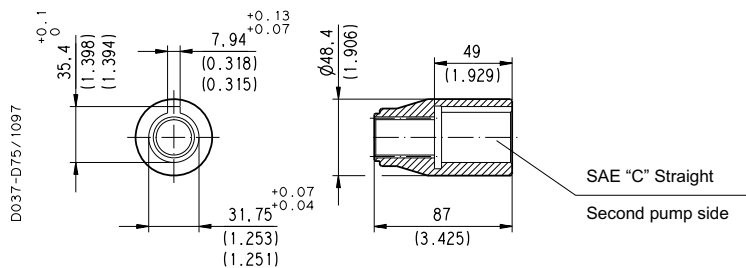


MAX 440 Nm (3894 lbf in)

SAE "C" STRAIGHT

34

Available with flange code **AS7**



MAX 495 Nm (4381 lbf in)

HOW TO ORDER MULTIPLE PUMPS

1	2	3	4	5	6	7	8	9	10	11	12
Pump type	Rotation	Drive shaft	Mounting flange	Ports position	Ports IN/OUT	Seals	Regulators	Addit. options	Fluid	Interm. flange	Coupling
LVP 30	S *	04	S5	L	MD/QB	N #	RP0	E	...	AS5	04
Front section											
LVP 30	S #	04	S5	L	MD/QB	N	LS2	E			
Rear section											

1 Pump type (cilindr. max)		CODE
in ³ /rev	cm ³ /rev	
1.74	29	LVP 30
2.76	46	LVP 48
4.38	73	LVP 75

2 Rotation		CODE
Anti-clockwise		S
Clockwise		D

3 Drive shaft		CODE
SAE "B" spline (13 teeth)		04
SAE "B" straight		32
straight Ø 22		68
SAE "BB" spline (15 teeth)		05
SAE "BB" straight		33
Straight Ø 25		69
SAE "C" spline (14 teeth)		06
SAE "C" straight		34
Straight Ø 32		70

4 Mounting flange		CODE
SAE "B" 2 holes		S5
ISO Ø 100		Z1
SAE "C" 2 holes		S7
ISO Ø 125		Z2

5 Ports position		CODE
Side		L
Rear (a)		P

6 Inlet/outlet ports		CODE	
SAE FLANGED PORTS METRIC THREAD (SSM)			
Pump type	Nominal size		
	Inlet IN SAE 3000	Outlet OUT SAE 6000	
LVP 30	1"1/4	3/4"	MD/QB
LVP 48	1"1/2	1"	ME/QC
LVP 75	2"	1"1/4	MF/QD
SAE FLANGED PORTS UNC THREAD (SSS)			
Pump type	Nominal size		
	Inlet IN SAE 3000	Outlet OUT SAE 6000	
LVP 30	1"1/4	3/4"	SD/VB
LVP 48	1"1/2	1"	SE/VC
LVP 75	2"	1"1/4	SF/VD

- * For assembled multiple pumps, the rotation code letter is added at the end of the complete ordering code.
 # Omit code only if ordering assembled multiple pumps.
 a) Not available for front sections.
 b) Standard setting 280 bar.

CODE	Seals	7
N	Buna (standard)	
V	Viton	

CODE	Regulators	8
RP0	Pressure compensator setting range 20 - 350 bar (b)	
LS0	Flow compensator (c)	
LS2	Flow compensator for remote control (c)	
LS3	Flow compensator for internal control (b)	
RN0	Torque limiter - standard	
RN1	Torque limiter - internal pilot	
S	Proportional flow servocontrol (d)	
SE	Proportional flow servocontrol with integral electronics (d)	
SER	Proportional flow servocontrol with integral electronics and seq. module RES (d)	

CODE	Additional options (e)	9
U.	Unloading valve (f)	
E	Max. displacement limiter (g-h)	
F	Min. displacement limiter (g-h)	
G	Min. and max. displacement limiter (g-h)	

CODE	Fluid	10
...	Mineral oil (no CODE)	
H	HF fluid (please consult our sales department)	

CODE	Intermediate flange	11
AS1	SAE "A" 2 holes	
AS5	SAE "B" 2 holes	
AS7	SAE "C" 2 holes	

CODE	Coupling	12
03	SAE "A" spline (9 teeth)	
31	SAE "A" straight	
04	SAE "B" spline (13 teeth)	
32	SAE "B" straight	
05	SAE "BB" spline (15 teeth)	
33	SAE "BB" straight	
06	SAE "C" spline (14 teeth)	
34	SAE "C" straight	

- c) Differential pressure standard setting 14 bar (setting range 10 - 40 bar).
 d) For more informations, please consult our sales department.
 e) For additional options, please consult our sales department.
 f) For voltages availability please see page 20.
 g) Max. up to 50% of the displacement.
 h) LVP30 with flange AS5 and LVP75 with flange AS7 are not available.



ORDER EXAMPLE

SINGLE PUMPS

Standard pump **LVP 30 S-04 S5-L MD/QB-N-LS2**

Pump with special features **LVP 30 S-04 S5-L MD/QB-N-LS2-E H**

ASSEMBLED MULTIPLE PUMPS

Standard double pump **LVP 30-04 S5-L MD/QB-RP0-AS5 04 / 30-04 S5-L MD/QB-N-LS2 S**

Double pump with special features **LVP 75-06 S7-L MF/QD-RP0-E H-AS5 04 / 30-04 S5-L MD/QB-N-LS2 S**

Double Plata pump with different series pumps **LVP 30-04 S5-L MD/QB-RP0-E-AS1 03 / PLP20.4-03 S1-L EA/EA-N S**

INDIVIDUAL SECTIONS

Front section **LVP 30 S-04 S5-L MD/QB-N-RP0-AS5 04**

Rear section **LVP 30 S-04 S5-L MD/QB-N-LS2**