

Filter

– Druckfilter –

Serie HF 760



Bestellnr. (ohne Filterelement)	Typ	Innen- gewinde G	Code
300-060-1000	HF760-20.080-B00-GD-B-DD-G	1/2"	HHP00109
300-060-1050	HF760-20.080-B60-GD-B-DD-G	1/2"	HHP00110
300-060-1100	HF760-20.080-B00-GE-B-DD-G	3/4"	HF760-20.080-B00-GE-
300-060-1150	HF760-20.080-B60-GE-B-DD-G	3/4"	HHP00120
300-060-1200	HF760-20.106-B00-GD-B-DD-G	1/2"	HF760-20.106-B00-GD-
300-060-1250	HF760-20.106-B60-GD-B-DD-G	1/2"	HHP00130
300-060-1300	HF760-20.106-B00-GE-B-DD-G	3/4"	HF760-20.106-B00-GE-
300-060-1350	HF760-20.106-B60-GE-B-DD-G	3/4"	HHP00140
300-060-1400	HF760-20.203-B00-GD-B-DD-G	1/2"	HF760-20.203-B00-GD-
300-060-1450	HF760-20.203-B60-GD-B-DD-G	1/2"	HHP00150
300-060-1500	HF760-20.203-B00-GE-B-DD-G	3/4"	HF760-20.203-B00-GE-
300-060-1550	HF760-20.203-B60-GE-B-DD-G	3/4"	HHP00160
300-060-1600	HF761-30.116-B00-GE-B-DD-G	3/4"	HF761-30.116-B00-GE-
300-060-1650	HF761-30.116-B60-GE-B-DD-G	3/4"	HF761-30.116-B60-GE-
300-060-1700	HF761-30.116-B00-GF-B-DD-G	1"	HF761-30.116-B00-GF-
300-060-1750	HF761-30.116-B60-GF-B-DD-G	1"	HF761-30.116-B60-GF-
300-060-1800	HF761-30.209-B00-GE-B-DD-G	3/4"	HHP07339
300-060-1850	HF761-30.209-B60-GE-B-DD-G	3/4"	HF761-30.209-B60-GE-
300-060-1900	HF761-30.209-B00-GF-B-DD-G	1"	HF761-30.209-B00-GF-
300-060-1950	HF761-30.209-B60-GF-B-DD-G	1"	HHP07341
300-060-2000	HF761-40.115-B00-GF-B-DD-G	1"	HF761-40.115-B00-GF-
300-060-2050	HF761-40.115-B60-GF-B-DD-G	1"	HF761-40.115-B60-GF-
300-060-2100	HF761-40.115-B00-GG-B-DD-G	1 1/4"	HF761-40.115-B00-GG-
300-060-2150	HF761-40.115-B60-GG-B-DD-G	1 1/4"	HHP00421
300-060-2200	HF761-40.210-B00-GF-B-DD-G	1"	HF761-40.210-B00-GF-
300-060-2250	HF761-40.210-B60-GF-B-DD-G	1"	HF761-40.210-B60-GF-
300-060-2300	HF761-40.210-B00-GG-B-DD-G	1 1/4"	HHP00506
300-060-2350	HF761-40.210-B60-GG-B-DD-G	1 1/4"	HHP00507
300-060-2400	HF761-40.210-B00-QD-B-DD-G	1 1/4"	HF761-40.210-B00-QD-
300-060-2450	HF761-40.210-B60-QD-B-DD-G	1 1/4"	HF761-40.210-B60-QD-
300-060-2500	HF761-40.329-B00-GF-B-DD-G	1"	HF761-40.329-B00-GF-
300-060-2550	HF761-40.329-B60-GF-B-DD-G	1"	HF761-40.329-B60-GF-
300-060-2600	HF761-40.329-B00-GG-B-DD-G	1 1/4"	HF761-40.329-B00-GG-
300-060-2650	HF761-40.329-B60-GG-B-DD-G	1 1/4"	HF761-40.329-B60-GG-
300-060-2700	HF761-40.329-B00-QD-B-DD-G	1 1/4"	HF761-40.329-B00-QD-
300-060-2750	HF761-40.329-B60-QD-B-DD-G	1 1/4"	HF761-40.329-B60-QD-
300-060-2800	HF761-40.428-B00-GG-B-DD-G	1 1/4"	HF761-40.428-B00-GG-
300-060-2850	HF761-40.428-B60-GG-B-DD-G	1 1/4"	HF761-40.428-B60-GG-
300-060-2900	HF761-40.428-B00-QD-B-DD-G	1 1/4"	HF761-40.428-B00-QD-
300-060-2950	HF761-40.428-B60-QD-B-DD-G	1 1/4"	HF761-40.428-B60-QD-

300-060

Filter

- Rücklauffilterelement - Druckfilter -



Bestellnr.	für Filtergehäuse	Typ	max. Durchfluss	Code
300-065-1000	HF760-20.080	HEK85-20.080-AS-FG003-LC-B	25	HHC01900
300-065-1050		HEK85-20.080-AS-FG006-LC-B	30	HHC01901
300-065-1100		HEK85-20.080-AS-FG010-LC-B	35	HHC01902
300-065-1150		HEK85-20.080-AS-FG025-LC-B	45	HHC01903
300-065-1200		HEK85-20.080-AS-FG003-HC-B	25	HHC01961
300-065-1250		HEK85-20.080-AS-FG006-HC-B	30	HHC01972
300-065-1300		HEK85-20.080-AS-FG010-HC-B	35	HHC01971
300-065-1350		HEK85-20.080-AS-FG025-HC-B	45	HHC01960
300-065-1400	HF760-20.106	HEK85-20.106-AS-FG003-LC-B	30	HHC01904
300-065-1450		HEK85-20.106-AS-FG006-LC-B	40	HHC01905
300-065-1500		HEK85-20.106-AS-FG010-LC-B	50	HHC01906
300-065-1550		HEK85-20.106-AS-FG025-LC-B	60	HHC01907
300-065-1600		HEK85-20.106-AS-FB060-LC-B		HHC01967
300-065-1650		HEK85-20.106-AS-FG003-HC-B	30	HHC01988
300-065-1700		HEK85-20.106-AS-FG006-HC-B	40	HHC01987
300-065-1750		HEK85-20.106-AS-FG010-HC-B	50	HHC01990
300-065-1800	HEK85-20.106-AS-FG025-HC-B	60	HHC01986	
300-065-1850	HF760-20.203	HEK85-20.203-AS-FG003-LC-B	60	HHC01908
300-065-1900		HEK85-20.203-AS-FG006-LC-B	65	HHC01909
300-065-1950		HEK85-20.203-AS-FG010-LC-B	75	HHC01910
300-065-2000		HEK85-20.203-AS-FG025-LC-B	85	HHC01911
300-065-2050		HEK85-20.203-AS-MI010-LC-B		HEK85-20.203-AS-MI01
300-065-2100		HEK85-20.203-AS-FG003-HC-B	60	HHC01891
300-065-2150		HEK85-20.203-AS-FG006-HC-B	65	HEK85-20.203-AS-FG00
300-065-2200		HEK85-20.203-AS-FG010-HC-B	75	HHC01969
300-065-2250	HEK85-20.203-AS-FG025-HC-B	85	HHC01979	
300-065-2300	HF761-30.116	HEK86-30.116-AS-FG003-LC-B	60	HEK86-30.116-AS-FG00
300-065-2350		HEK86-30.116-AS-FG006-LC-B	65	HHC03160
300-065-2400		HEK86-30.116-AS-FG010-LC-B	80	HHC03175
300-065-2450		HEK86-30.116-AS-FG025-LC-B	100	HHC03176
300-065-2500		HEK86-30.116-AS-FG003-HC-B	60	HHC03159
300-065-2550		HEK86-30.116-AS-FG006-HC-B	65	HEK86-30.116-AS-FG00
300-065-2600		HEK86-30.116-AS-FG010-HC-B	80	HEK86-30.116-AS-FG01
300-065-2650		HEK86-30.116-AS-FG025-HC-B	100	HHC03156
300-065-2700	HF761-30.209	HEK86-30.209-AS-FG003-LC-B	105	HEK86-30.209-AS-FG00
300-065-2750		HEK86-30.209-AS-FG006-LC-B	120	HHC03336
300-065-2800		HEK86-30.209-AS-FG010-LC-B	135	HHC03338
300-065-2850		HEK86-30.209-AS-FG025-LC-B	155	HHC03340
300-065-2900		HEK86-30.209-AS-MI010-LC-B		HEK86-30.209-AS-MI01
300-065-2950		HEK86-30.209-AS-MI025-LC-B		HEK86-30.209-AS-MI02

300-060

Filter

- Rücklauffilterelement - Druckfilter -

Bestellnr.	für Filtergehäuse	Typ	max. Durchfluss	Code	
300-065-3000	HF761-30.209	HEK86-30.209-AS-MI060-LC-B		HHC03320	
300-065-3050		HEK86-30.209-AS-FG003-HC-B	105	HEK86-30.209-AS-FG00	
300-065-3100		HEK86-30.209-AS-FG006-HC-B	120	HEK86-30.209-AS-FG00	
300-065-3150		HEK86-30.209-AS-FG010-HC-B	135	HHC03339	
300-065-3200		HEK86-30.209-AS-FG025-HC-B	155	HEK86-30.209-AS-FG02	
300-065-3250	HF761-40.115	HEK86-40.115-AS-FG003-LC-B	115	HEK86-40.115-AS-FG00	
300-065-3300		HEK86-40.115-AS-FG006-LC-B	130	HHC03382	
300-065-3350		HEK86-40.115-AS-FG010-LC-B	160	HHC03384	
300-065-3400		HEK86-40.115-AS-FG025-LC-B	195	HHC03386	
300-065-3450		HEK86-40.115-AS-MI010-LC-B		HEK86-40.115-AS-MI01	
300-065-3500		HEK86-40.115-AS-FG003-HC-B	115	HEK86-40.115-AS-FG00	
300-065-3550		HEK86-40.115-AS-FG006-HC-B	130	HEK86-40.115-AS-FG00	
300-065-3600		HEK86-40.115-AS-FG010-HC-B	160	HEK86-40.115-AS-FG01	
300-065-3650		HEK86-40.115-AS-FG025-HC-B	195	HEK86-40.115-AS-FG02	
300-065-3700		HF761-40.210	HEK86-40.210-AS-FG003-LC-B	195	HEK86-40.210-AS-FG00
300-065-3750	HEK86-40.210-AS-FG006-LC-B		215	HHC03397	
300-065-3800	HEK86-40.210-AS-FG010-LC-B		250	HHC03402	
300-065-3850	HEK86-40.210-AS-FG025-LC-B		295	HHC03398	
300-065-3900	HEK86-40.210-AS-FG003-HC-B		195	HHC03393	
300-065-3950	HEK86-40.210-AS-FG006-HC-B		215	HHC03396	
300-065-4000	HEK86-40.210-AS-FG010-HC-B		250	HHC03394	
300-065-4050	HEK86-40.210-AS-FG025-HC-B		295	HEK86-40.210-AS-FG02	
300-065-4100	HF761-40.329		HEK86-40.329-AS-FG003-LC-B	240	HEK86-40.329-AS-FG00
300-065-4150			HEK86-40.329-AS-FG006-LC-B	255	HHC03399
300-065-4200		HEK86-40.329-AS-FG010-LC-B	275	HHC03403	
300-065-4250		HEK86-40.329-AS-FG025-LC-B	295	HHC03404	
300-065-4300		HEK86-40.329-AS-RP010-LC-B		HEK86-40.329-AS-RP01	
300-065-4350		HEK86-40.329-AS-FG003-HC-B	240	HHC03406	
300-065-4400		HEK86-40.329-AS-FG006-HC-B	255	HHC03408	
300-065-4450		HEK86-40.329-AS-FG010-HC-B	275	HEK86-40.329-AS-FG01	
300-065-4500		HEK86-40.329-AS-FG025-HC-B	295	HHC03409	
300-065-4550		HF761-40.428	HEK86-40.428-AS-FG003-LC-B	270	HHC03405
300-065-4600	HEK86-40.428-AS-FG006-LC-B		280	HEK86-40.428-AS-FG00	
300-065-4650	HEK86-40.428-AS-FG010-LC-B		295	HHC03407	
300-065-4700	HEK86-40.428-AS-FG025-LC-B		310	HEK86-40.428-AS-FG02	
300-065-4750	HEK86-40.428-AS-FG003-HC-B		270	HHC03410	
300-065-4800	HEK86-40.428-AS-FG006-HC-B		280	HEK86-40.428-AS-FG00	
300-065-4850	HEK86-40.428-AS-FG010-HC-B		295	HHC030336	
300-065-4900	HEK86-40.428-AS-FG025-HC-B		310	HEK86-40.428-AS-FG02	



IN-LINE HIGH PRESSURE FILTERS HF 760-765 SERIES



The in-line high pressure filters HF 760 and HF 765 series are specifically designed to be connected on the pressure line of the hydraulic circuit and provide versatility to safeguard the circuit components from contaminating particles.

- MULTILAYER SYSTEM
- FILTRATION RATIO $\beta_x \geq 200$
- UPPER AND SIDE OUTLET PORTS

COMPLETE FILTER		
MATERIALS	Head	Spheroidal cast iron GS 450-10 UNI ISO 1083
	Bowl	Extruded steel
	Seals	Buna - Viton
FLUID COMPATIBILITY CONFORMING TO ISO 2943	With reference to ISO 6743/4	With fluid (HH-HL-HM-HR-HV-HG), and water emulsion (HFAE-HFAS) use filters with Buna seals. With water - glycol (HFC) ask for anodizing treatment.
		With synthetic fluid (HS-HFDR-HFDU-HFDS) use filters with Viton seals.
FLOW RANGE	min.	30 [l/min]
	max.	400 [l/min]
MAX. WORKING PRESSURE		42000 [kPa] 420 bar
TESTING PRESSURE		60000 [kPa] 600 bar
BURST PRESSURE		126000 [kPa] 1260 bar
REFERENCE FATIGUE LIFE	HF 760-20/30 (with $\Delta p_0 \div 420$ bar)	1.000.000 cycles
	HF 760-40 (with $\Delta p_0 \div 280$ bar)	
OPERATING TEMPERATURE	With Buna seals	- 30 + 90 [°C]
	With Viton seals	- 20 + 110 [°C]
FILTER ELEMENTS		
MATERIALS	End cap - Inner tube	Zinc plated steel (With water - glycol ask for cover with zinc)
	Filter media	Inorganic micro-fibre glass
REMOVAL RATING		Conforming to ISO 16889
ELEMENT COLLAPSE PRESSURE RATING	Conforming to ISO 2941	2000 [kPa] 20 bar (vers. LC)
		21000 [kPa] 210 bar (vers. HC)

IKRON S.r.l.

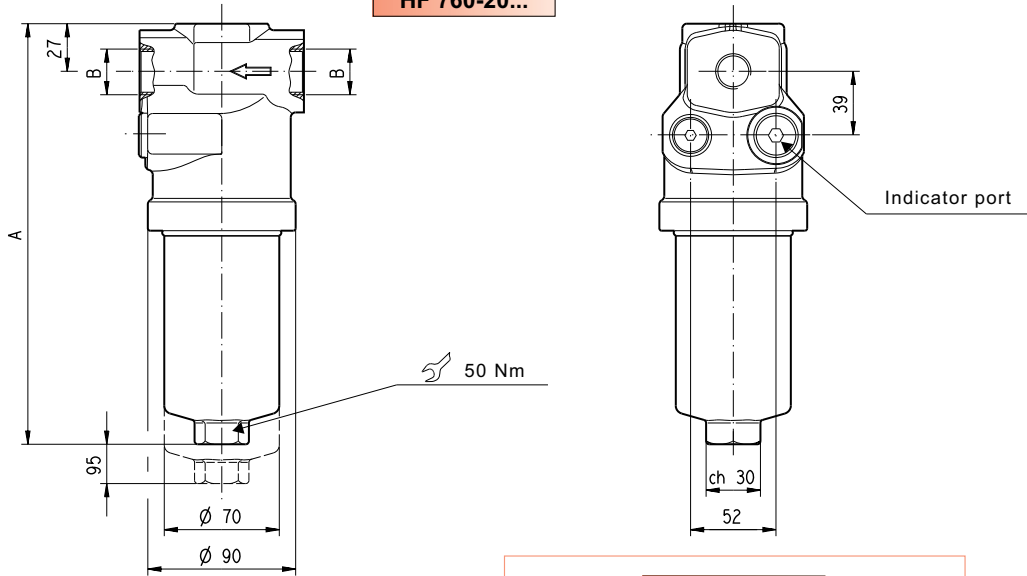
43044 Lemignano di Collecchio (PR) - Italy Via C. Prampolini, 2
Telephone: (+ 39) 0521 304911 - Fax (+ 39) 0521 304900 - <http://www.casappa.com> - e-mail: ikron@casappa.com

Replaces: HF 760.02 T E

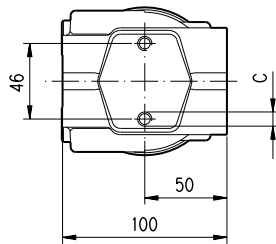
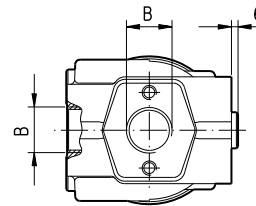
Edition: 03/05.2003

TECHNICAL DATA

HF 760-20...



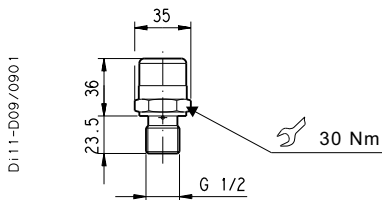
HF 765-20...



Di11-D07/0901

VISUAL DIFFERENTIAL INDICATOR

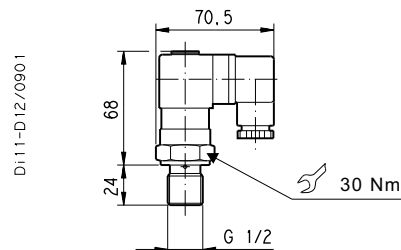
H



Di11-D09/0901

VISUAL ELECTR. DIFF. INDICATOR

U
W



Di11-D12/0901

Filter type		A	B (◆)			C (*)
		mm	GAS (BSPP)	NPT	SAE J514b	
HF 760-20.080	HF 765-20.080	200	G 1/2	1/2 NPT	3/4-16 UNF-2B	M 8
HF 760-20.106	HF 765-20.106	226		3/4 NPT	1-1/16-12 UNF-2B	
HF 760-20.203	HF 765-20.203	323	G 3/4			

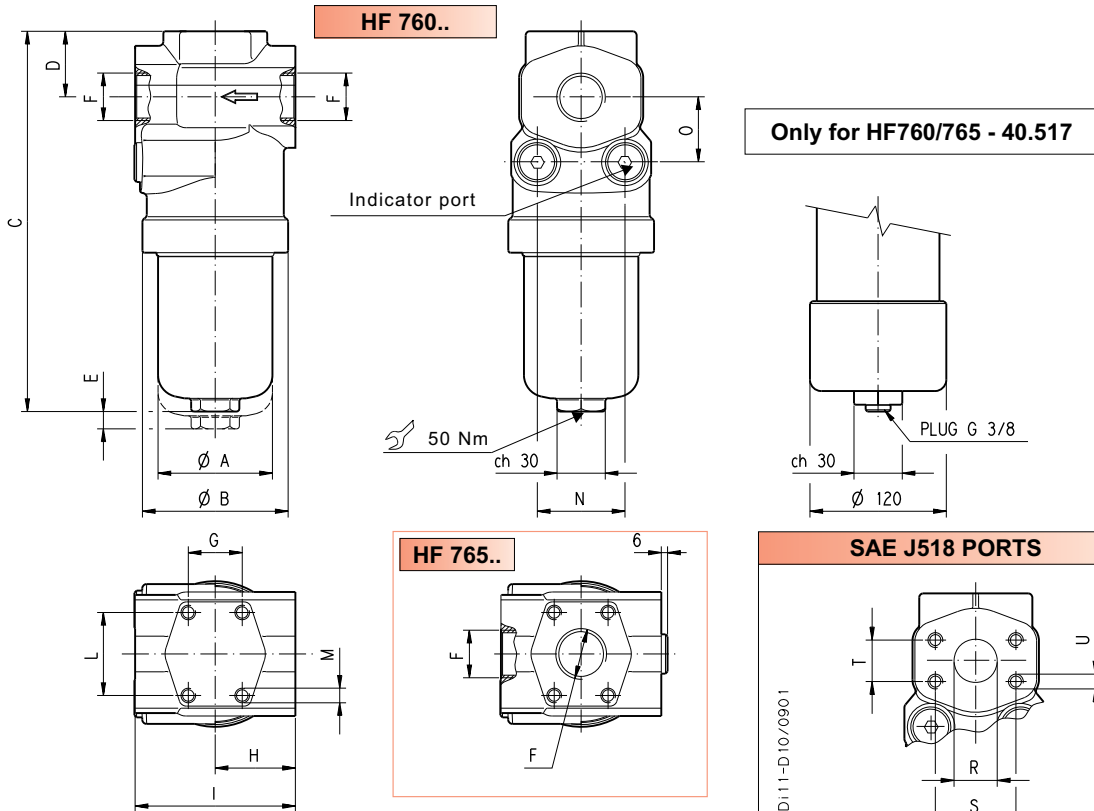
(◆) Please consult our technical department for HF 765 serie.

(*) The respective threads 5/16-18 UNC-2B is available.

Replaces: 11.98

Di11-002 - 02/10.01

TECHNICAL DATA



SAE J518 - 3000 PSI				
Nominal dimensions	R	S	T	U (*)
	mm	mm	mm	mm
3/4"	19	47,63	22,23	M10
1"	25,4	52,37	26,19	M10
1" 1/4	32	58,72	30,18	M10
1" 1/2	38	69,85	35,71	M12

(*) The respective UNC threads are available.

SAE J518 - 6000 PSI				
Nominal dimensions	R	S	T	U (*)
	mm	mm	mm	mm
3/4"	19	50,8	23,8	M10
1"	25,4	57,15	27,76	M12
1" 1/4	32	66,68	31,75	M14
1" 1/2	38	79,38	36,5	M16

(*) The respective UNC threads are available.

Filter type		A	B	C	D	E	G	H	I	L	M	N	O
		mm	mm	mm	mm	mm	mm	mm	mm	mm			
HF 760-30.115	HF 765-30.115	78,5	100	252	39	100	37	55	110	57	M10 ①	60	45
HF 760-30.223	HF 765-30.223			360									
HF 760-40.102	HF 765-40.102	105	122	276	47	105	64	70	140	76	M12 ②	70	58
HF 760-40.132	HF 765-40.132			306									
HF 760-40.227	HF 765-40.227			401									
HF 760-40.372	HF 765-40.372			546									
HF 760-40.517	HF 765-40.517			685									

① The respective threads 3/8-16 UNC-2B is available.

② The respective threads 1/2-13 UNC-2B is available.

Filter type		F (◆)				
		GAS (BSPP)	NPT	SAE J514b	SAE J518 - 3000 PSI (■)	SAE J518 - 6000 PSI (■)
HF 760-30.115	HF 765-30.115	G 3/4	3/4 NPT	1-1/16-12 UNF-2B	3/4"	3/4"
HF 760-30.223	HF 765-30.223	G 1	1 NPT	1-5/16-12 UNF-2B	1"	1"
HF 760-40.102	HF 765-40.102	G 1	1 NPT	1-5/8-12 UNF-2B	1" 1/4	1" 1/4
HF 760-40.132	HF 765-40.132					
HF 760-40.227	HF 765-40.227					
HF 760-40.372	HF 765-40.372					
HF 760-40.517	HF 765-40.517					
		G 1 1/4	1 1/4 NPT	1-7/8-12 UNF-2B	1" 1/2	1" 1/2
		G 1 1/2	1 1/2 NPT			

(◆) Please consult our technical department for HF 765 serie.


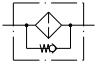
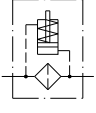
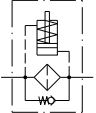
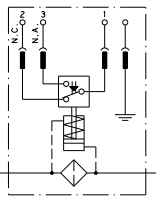
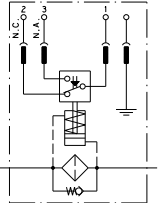
(■) Nominal dimensions.

Replaces: 11.96

D:11-D08/1001

D:11-D10/0901

D:11-002 - 02/10.01

GRAPHIC SYMBOLS					
					
Filter	With By-pass valve	With visual differential indicator H	With By-pass valve and visual differential indicator H	With electr.-visual differential indicator U	With By-pass valve and electr.-visual differential indicator U

HOW TO ORDER A COMPLETE FILTER

	1	2	3	4	5	6	7	8	9
HF760 HF765	20.080 -	AS	- FG003 -	LC	- B60 -	GD	- B	- DD	- G

1	Filter type	CODE
See table page 2 and 3		HF76.
2	Filtering surface	CODE
Standard		AS
Multilayer		MS
3	Degree of filtration	CODE
3	[µm] Micro-fibre glass	FG003
6	[µm] Micro-fibre glass	FG006
10	[µm] Micro-fibre glass	FG010
25	[µm] Micro-fibre glass	FG025
4	Δp - collaps press.	CODE
2000 [kPa]; 20 [bar]		LC
21000 [kPa]; 210 [bar]		HC
5	By-pass valve	CODE
Setting 600 [kPa]; 6 [bar]		B60
None		B00

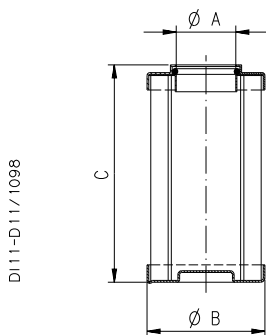
6	Ports IN/OUT	CODE
Thread GAS (BSPP)		
G 1/2		GD
G 3/4		GE
G 1		GF
G 1 1/4		GG
G 1 1/2		GH
SAE J518 - 3000 PSI - Metric thread		
3/4"		MB
1"		MC
1" 1/4		MD
1" 1/2		ME
SAE J518 - 6000 PSI - Metric thread		
3/4"		QB
1"		QC
1" 1/4		QD
1" 1/2		QE

7	Seals	CODE
Buna		B
Viton		V
8	Indicators arrang.	CODE
Arranged		XA
Arranged with plug		DD
9	Indicators	CODE
None		G
Visual differential indicator		H
Visual electrical differ. indicator		U
Visual electrical differ. indicator with thermostat		W

Standard
 On request

Replaces: 11.98

FILTERING ELEMENTS HF 760 AND HF 765 - TECHNICAL DATA



Element type	Ø A	Ø B	C	Standard filtering surface (FG)
	mm	mm	mm	cm ²
HE K85-20.080	25,5	46,5	87	415
HE K85-20.106			113	560
HE K85-20.203			210	1103
HE K85-30.115	27,5	54,5	122	908
HE K85-30.223			230	1808
HE K85-40.102	40,5	78	110	1757
HE K85-40.132			140	2306
HE K85-40.227			235	4045
HE K85-40.372			380	6700
HE K85-40.517			525	9350

Filtering elements with Δp - collaps pressure of 210 bar are also available (please consult our techn. department).

HOW TO ORDER A REPLACEMENT ELEMENT

1	2	3	4	5
HE K85-20.080	- AS	- FG003	- LC	- B

1	Element type	CODE
See table		HE K85..
2	Filtering surface	CODE
See table ref. 2 ♦		

3	Degree of filtration	CODE
See table ref. 3 ♦		
4	Δp - collaps press.	CODE
See table ref. 4 ♦		

5	Seals	CODE
See table ref. 7 ♦		

♦ Table how to order a filter.

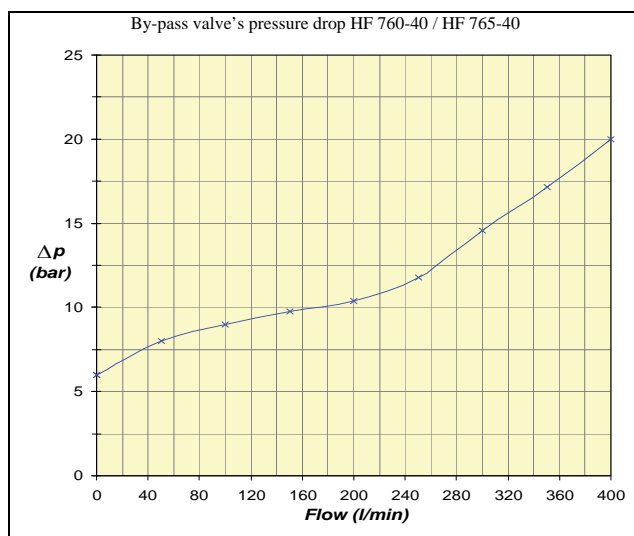
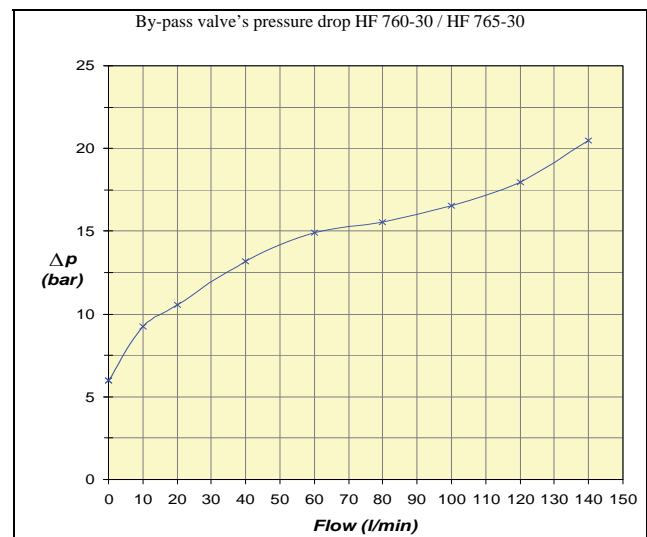
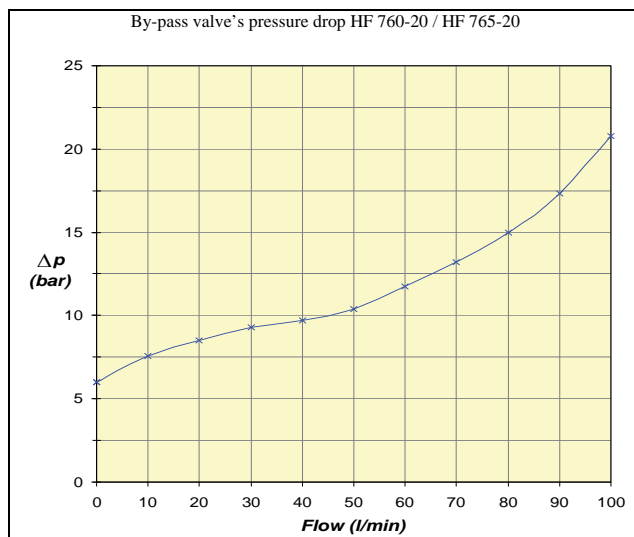
D111-002 - 02/10.01

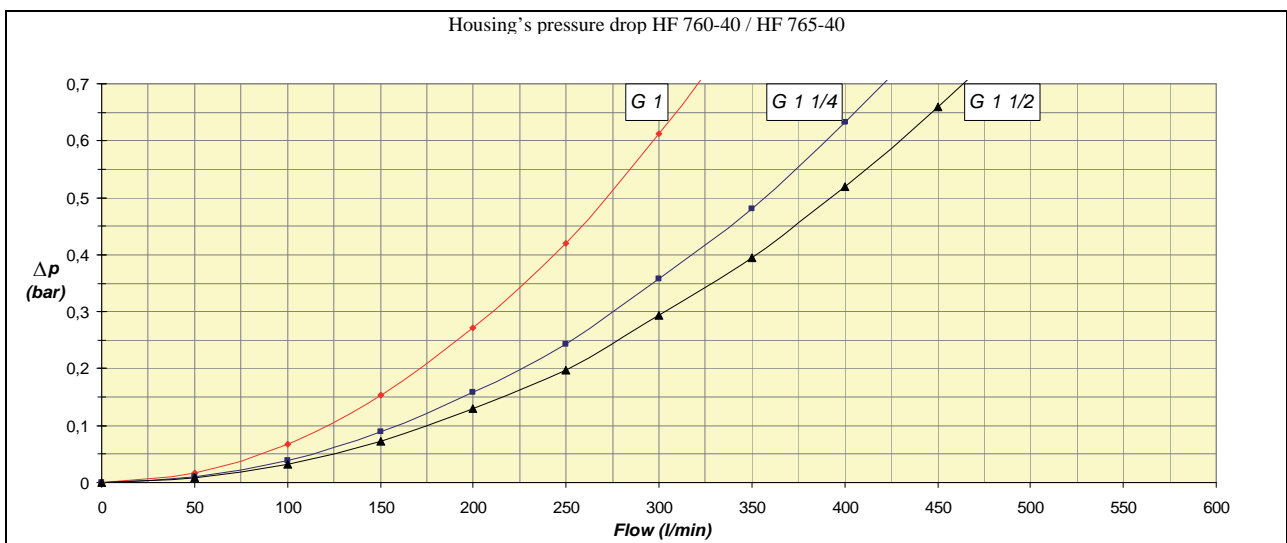
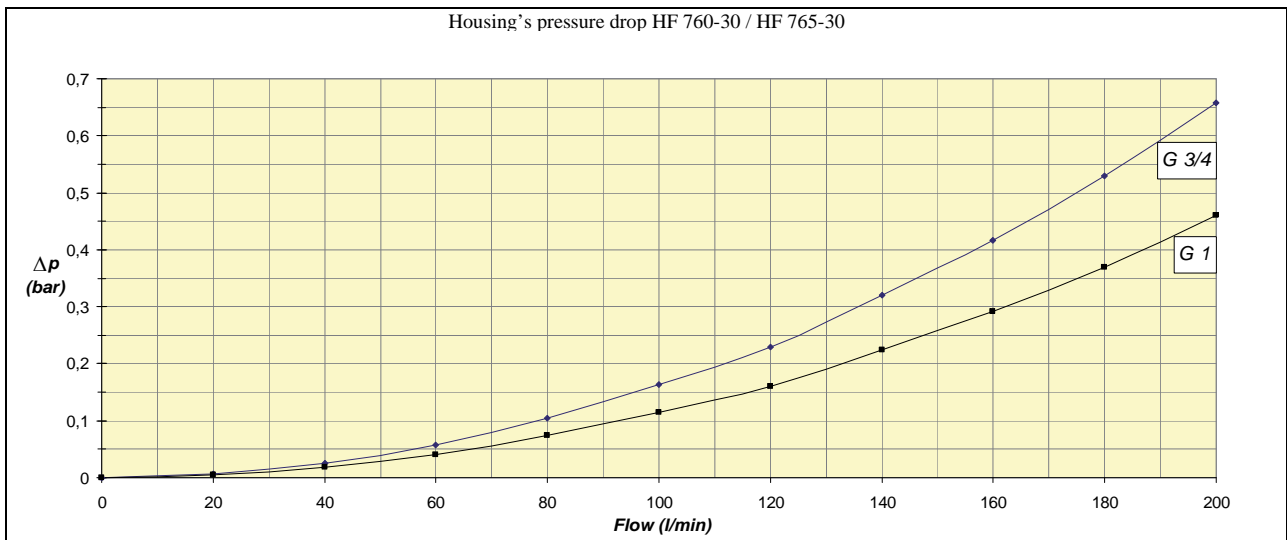
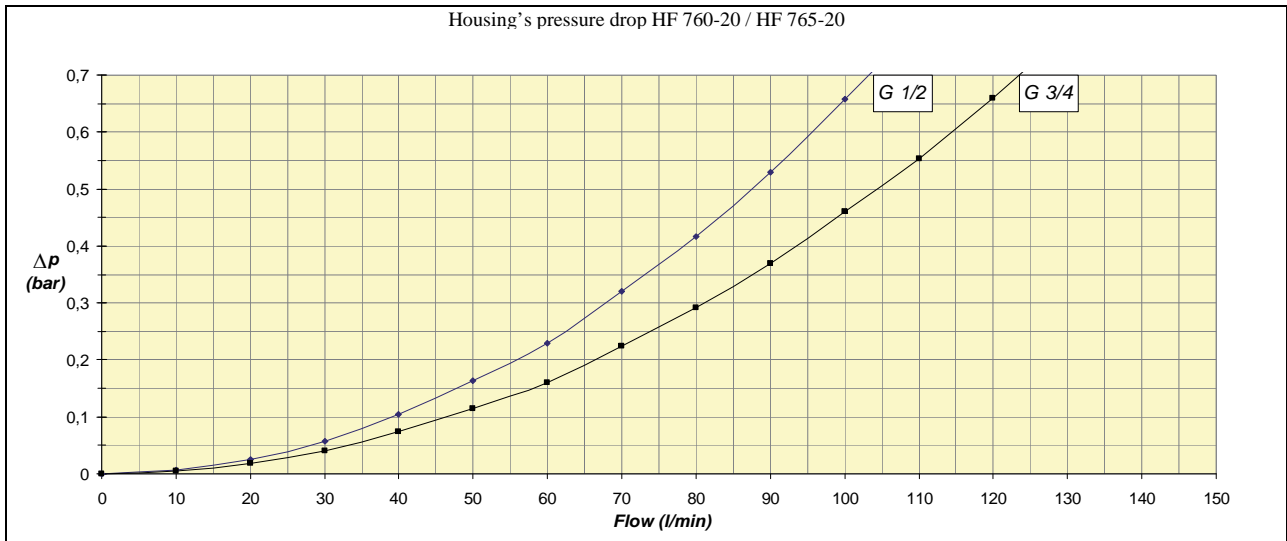
PRESSURE DROP CURVES

The pressure drop for medium pressure filters series HF 745 on equipments with regular use is 0,75 bar max, while the pressure drop has to be between 1 and 1,5 bar on equipments with heavy working.

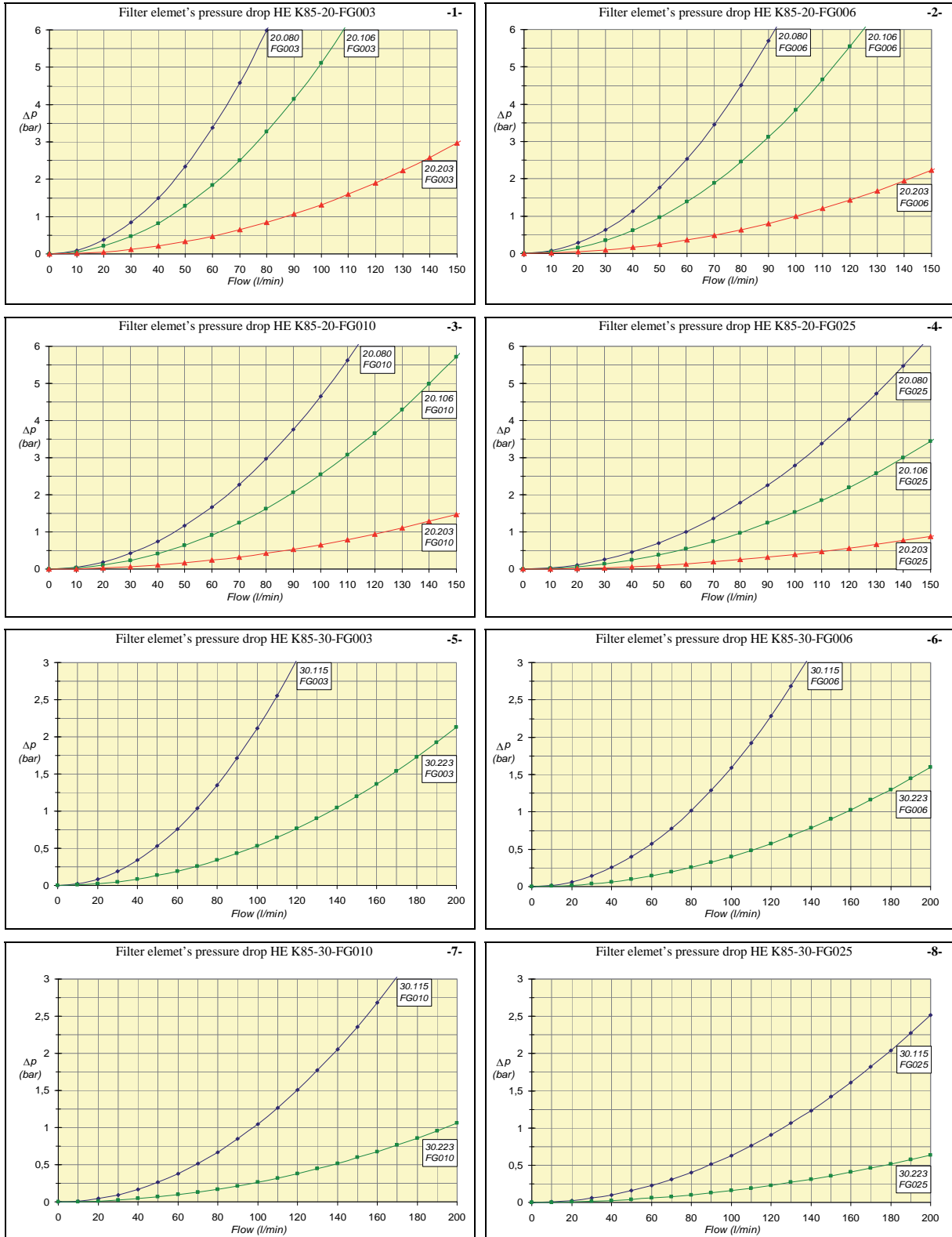
The filters series HF 745 grants a ratio $\beta \times \geq 200$.

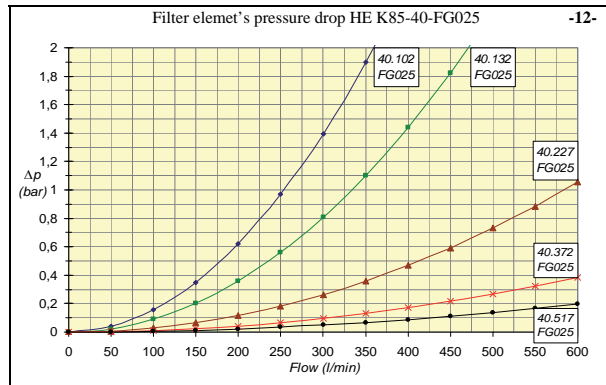
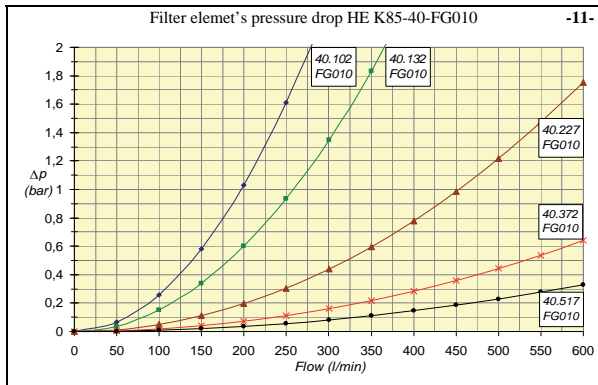
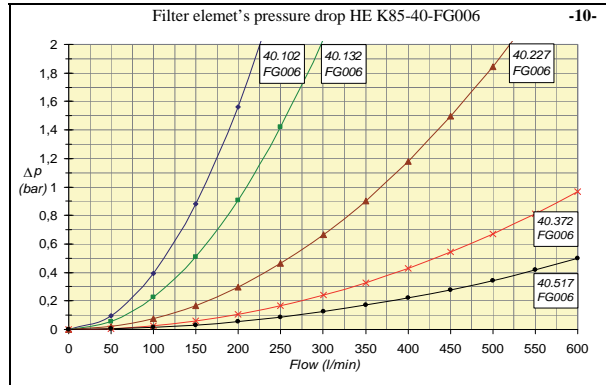
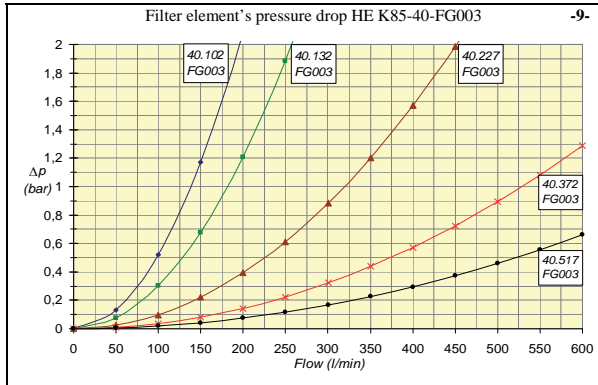
1) The **by-pass pressure drop** is directly proportional to fluid specific gravity and it's irrelevant to determine the total pressure drop.





3) The **filter element's pressure drop** is determined by standard media and AS surface, they have been calculated experimentally and they are valid for clean elements.





FILTRI HF 760 -765 / FILTERS HF 760 - 765

Bocca Ingresso Inlet Port	3 MICRON ASS./ABS.		6 MICRON ASS./ABS.		Peso Filtro Filter Weight (Kg)
	Portata Flow (lt/min)	Filtro Tipo Filter Type	Portata Flow (lt/min)	Filtro Tipo Filter Type	
G 1/2"	25	HF760-20.080 HF765-20.080 FG003	30	HF760-20.080 HF765-20.080 FG006	5,3
G 3/4"	25		35		
G 1/2"	30	HF760-20.106 HF765-20.106 FG003	40	HF760-20.106 HF765-20.106 FG006	5,7
G 3/4"	30		40		
G 1/2"	50	HF760-20.203 HF765-20.203 FG003	55	HF760-20.203 HF765-20.203 FG006	7,2
G 3/4"	55		60		
G3/4"	55	HF760-30.115 HF765-30.115 FG003	60	HF760-30.115 HF765-30.115 FG006	8,2
G 1"	60		65		
G 3/4"	90	HF760-30.223 HF765-30.223 FG003	100	HF760-30.223 HF765-30.223 FG006	10
G 1"	100		110		
G1"	105	HF760-40.102 HF765-40.102 FG003	120	HF760-40.102 HF765-40.102 FG006	14,3
G1"1/4	105		120		
G1"1/2	110		125		
G1"	125	HF760-40.132 HF765-40.132 FG003	140	HF760-40.132 HF765-40.132 FG006	15,2
G1"1/4	140		160		
G1"1/2	140		160		
G1"	200	HF760-40.227 HF765-40.227 FG003	210	HF760-40.227 HF765-40.227 FG006	18
G1"1/4	210		225		
G1"1/2	225		250		
G1"	250	HF760-40.372 HF765-40.372 FG003	260	HF760-40.372 HF765-40.372 FG006	22
G1"1/4	260		275		
G1"1/2	270		290		
G1"	260	HF760-40.517 HF765-40.517 FG003	270	HF760-40.517 HF765-40.517 FG006	28,5
G1"1/4	290		300		
G1"1/2	330		350		

FILTRI HF 760 - 765 / FILTERS HF 760 - 765

Bocca Ingresso Inlet Port	10 MICRON ASS./ABS.		25 MICRON ASS./ABS.		Peso Filtro Filter Weight (Kg)
	Portata Flow (lt/min)	Filtro Tipo Filter Type	Portata Flow (lt/min)	Filtro Tipo Filter Type	
G 1/2"	35	HF760-20.080 HF765-20.080 FG010	45	HF760-20.080 HF765-20.080 FG025	5,3
G 3/4"	40		50		
G 1/2"	45	HF760-20.106 HF765-20.106 FG010	60	HF760-20.106 HF765-20.106 FG025	5,7
G 3/4"	50		70		
G 1/2"	60	HF760-20.203 HF765-20.203 FG010	80	HF760-20.203 HF765-20.203 FG025	7,2
G 3/4"	70		90		
G3/4"	70	HF760-30.115 HF765-30.115 FG010	90	HF760-30.115 HF765-30.115 FG025	8,2
G 1"	75		100		
G 3/4"	120	HF760-30.223 HF765-30.223 FG010	130	HF760-30.223 HF765-30.223 FG025	10
G 1"	130		150		
G1"	140	HF760-40.102 HF765-40.102 FG010	170	HF760-40.102 HF765-40.102 FG025	14,3
G1"1/4	150		190		
G1"1/2	150		200		
G1"	170	HF760-40.132 HF765-40.132 FG010	210	HF760-40.132 HF765-40.132 FG025	15,2
G1"1/4	190		225		
G1"1/2	200		240		
G1"	240	HF760-40.227 HF765-40.227 FG010	250	HF760-40.227 HF765-40.227 FG025	18
G1"1/4	260		280		
G1"1/2	280		300		
G1"	280	HF760-40.372 HF765-40.372 FG010	300	HF760-40.372 HF765-40.372 FG025	22
G1"1/4	310		330		
G1"1/2	320		350		
G1"	300	HF760-40.517 HF765-40.517 FG010	320	HF760-40.517 HF765-40.517 FG025	28,5
G1"1/4	350		370		
G1"1/2	380		400		