

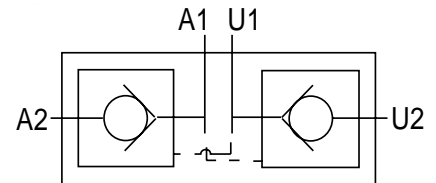
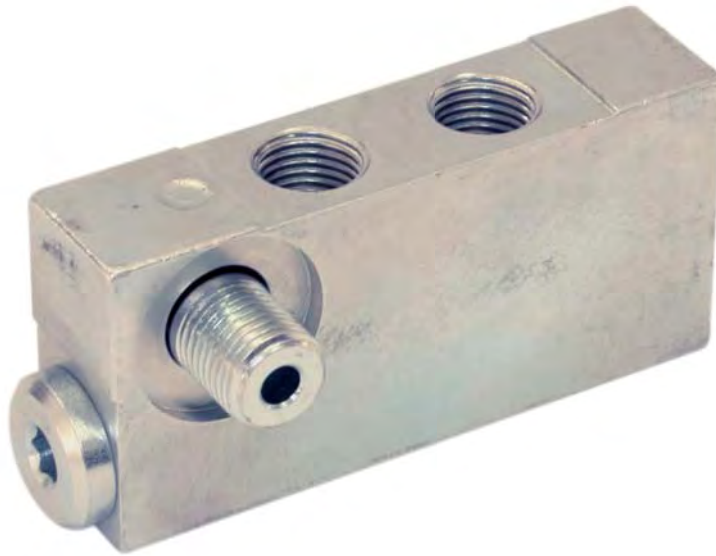
Hydraulikventile

**VRDE...CIL – entsperrbares Rückschlagventil
doppeltwirkend**

Material: Stahl galvanisiert

Hydraulic valves

**VRDE...CIL – pilot-
controlled check valve**
- double acting -
material: steel galvanized



doppeltwirkend / double acting
Leitungseinbau / inline mounting

Bestell-Nr. code	Typ type	Gewinde thread	Q max. l/min	P max. bar	Übersetz- verhältnis ratio	kg
Kegelspernung / poppet type						
210-030-01350	VRDE010CIL14	1/4"	20	300	1:4,5	0,62
210-030-01400	VRDE020CIL38	3/8"	20	300	1:4,9	0,57