

## Hydraulikventile

**VS2C – Druckfolgeventil**

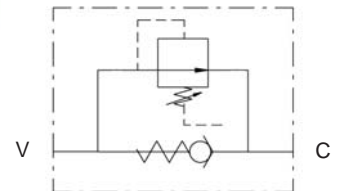
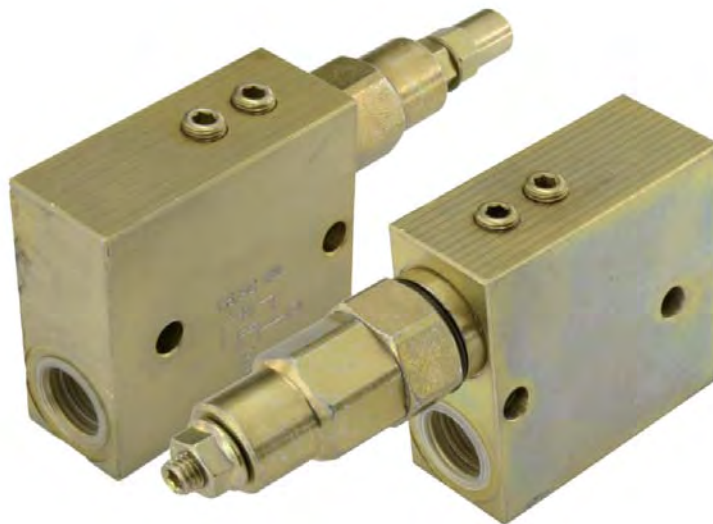
***Federraumentlastet***

*Material: Stahl galvanisiert*

## Hydraulic valves

**VS2C – sequenz valve**

*- spring chamber released -  
material: steel galvanized*



Leitungseinbau / inline mounting

Bestell-Nr. code	Typ type	Gewinde thread	Q max. l/min	P max. bar	kg
210-140-01200	VSQAPP38D	3/8"	35	250	1,25
210-140-01250	VSQAPP12D	1/2"	60	250	1,30

Feder / spring

A= 5-50 bar – B= 20-100 bar – C= 40-180 bar – **D= 50-250 bar (standard)** – E= 80-300 bar

210-140