

Wechselventile

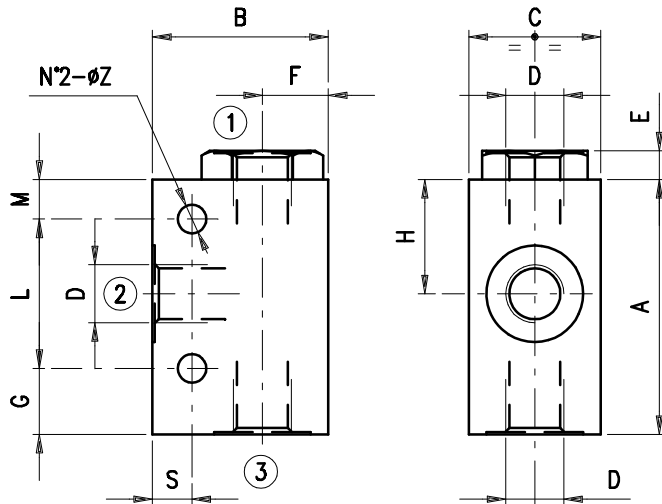
– G 3/8" und G 1/2" –



Bestellnr.	Typ	Bezeichnung	Gehäuse	max. Betriebsdruck bar	max. Durchfluss l/min	Code
230-0630-2390	VT 38/ac	3/8"	Stahl	400	35	1320022100
230-0630-2395	VT 12/ac	1/2"			50	1320032100

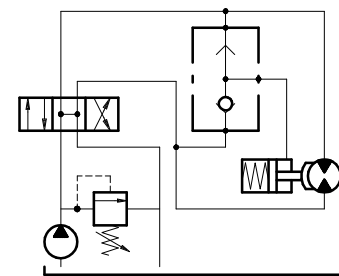
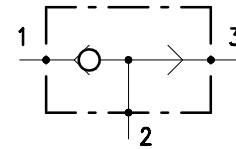
VT 38 VT12

• DIMENSIONS (mm)



VT	A	B	C	D	E	F	G	H	L	M	S	Z
38	70	50	35	G 3/8	6.5	19	16	31.5	45	9	9	6.5
12	80	60	43	G 1/2	8	23	18	36	52	10	10	8.5

• HYDRAULIC DIAGRAM



• DESCRIPTION

Shuttle valve, ball type.

• OPERATION

Oil flow is produced from 1 to 2 or 3 to 2 with priority to the way with the bigger pressure.

• PERFORMANCE

Maximum flow:

- VT 38 = 35 l/min.
- VT 12 = 50 l/min.

Maximum Pressure: 400 bar.

Working temperature:

- minimum 25°C and max +90°C with standard BUNA gaskets
- minimum 20°C and max +120°C with special VITON gaskets on request

• RECOMMENDATIONS

Fluid: best use mineral oil with viscosity ranging between 10 and 200 cSt.

Filter: see page Z.9000.000.

Weight:

- VT 38 = 0.84 kg
- VT 12 = 1.35 kg

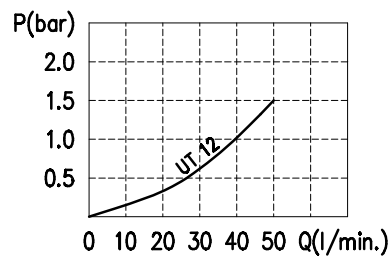
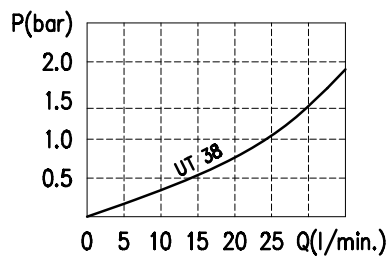
Material: internal components made out of high grade steel duly treated and fabricated.

For more information please ask our technical office .

Variations and modifications of technical features and dimensions are reserved. **OLEOSTAR S.p.A.** also reserves the right to stop production of each and any model listed in the catalogue with no notice.

230-0630

• RATING DIAGRAMS



Oil viscosity 46 cSt

• CODE NUMBER

