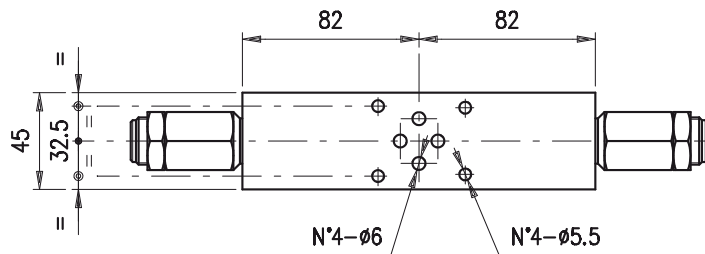
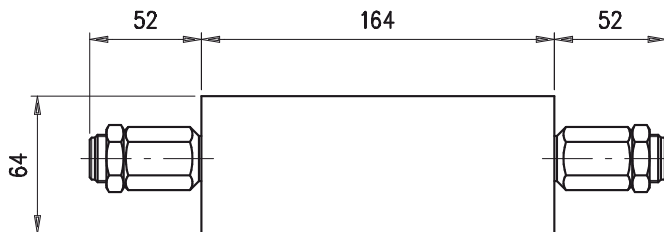


Senkbremsventil – doppelwirkend Zwischenplatte Cetop 03 –

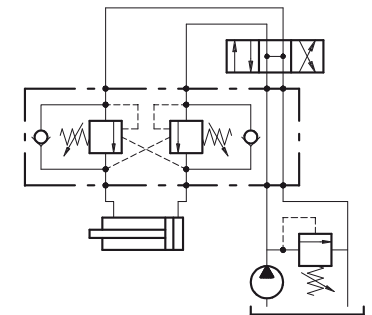
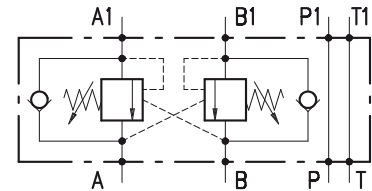
Bestellnr.	Typ	Bezeichnung	Gehäuse	max. Betriebsdruck bar	max. Durchfluss l/min	Code
230-1020-3205	VODL/ML 6-38/TS.S.p4	3/8"-Öff.v. 1:4 / 5-210bar	Alu	210	35	1558021800
230-1020-3210	VODL/ML 6-38/TR.S.p4	3/8"-Öff.v. 1:4 / 50-350bar				1558021802

OVERCENTER VALVES
VODL /ML 6-38

• DIMENSIONS (mm)



• HYDRAULIC DIAGRAM



• DESCRIPTION

Dual overcenter valves, sandwich mounting NG6, cartridge construction.

• OPERATION

The oil flow is allowed from A (B) to A1 (B1) and is stopped in the opposite way from A1 (B1) to A (B) up to the spring setting value. Free oil flow from A1 (B1) to A (B) is strictly possible when the pilot pressure in B and B1 (A and A1) is strong enough to pilot the valve poppet.

Use the following formula to assert the applicable pilot pressure:

$$(\text{valve setting} - \text{load pressure}) \div \text{pilot ratio} = \text{pilot pressure}$$

For example:

If your pilot ratio is 1:4, your setting pressure is 250 bar and your load pressure is 130 bar then you will need 30 bar pilot pressure in order to displace the load. [(250 bar – 130 bar) ÷ 4 = 30 bar].

Counterpressure in A (B) increase the setting value (1:1 ratio) of the poppet spring and negatively affect the pilot pressure (1:1 ratio).

Lack of overcenter stability and troublesome motion even after complete valve assembly, will suggest that the valve application may require a PG version. Please contact our technical service for action.

• PERFORMANCE

Maximum flow: 35 l/min.

Maximum Pressure:

- Aluminium body 210 bar
- Steel body 350 bar

Application range with standard springs:

- 5 - 210 bar (test setting: 170 bar at 5 l/min)
- 50 - 350 bar (test setting: 280 bar at 5 l/min)
- 100 - 700 bar (test setting: 350 bar at 5 l/min)

Oil leak from U1 to D1: 0.25 cc/minute (5 drops) at 210 bar and 80% of the spring setting value with oil viscosity of 46 cSt.

Pilot ratio:

- 1:4 (standard type)

230-1020

- 1:3 (on request only)

Working temperature:

- Minimum -25°C max 90°C with standard BUNAN gaskets
- Minimum -20°C max 200°C with optional VITON gaskets

• **RECOMMENDATIONS**

Fluid: best use mineral oil with viscosity ranging between 10 and 200 cSt

Filter: see page Z.9000.000.

Weight: aluminium body 1.75 kg - steel body 3.75 kg

Overcenter cartridge: see page 1.2000.100.

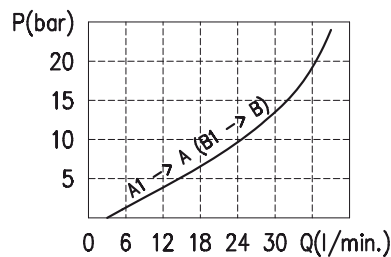
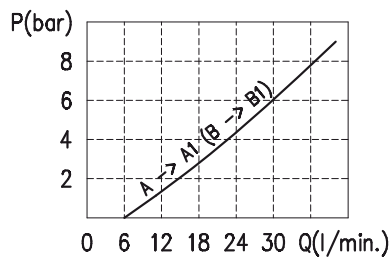
Material: internal components made out of high-grade steel duly treated and fabricated.

For more information please ask our technical office.

Variations and modifications of technical features and dimensions are reserved. **OLEOSTAR S.p.A.** also reserves the right to stop production of each and any model listed in the catalogue with no notice.

Copyrights on the text contained herein belong to **OLEOSTAR S.p.A.** . Partial and full reproductions or copies of this catalogue are forbidden.

• **RATING DIAGRAMS**



Oil viscosity 46 cSt

• **CODE NUMBER**

