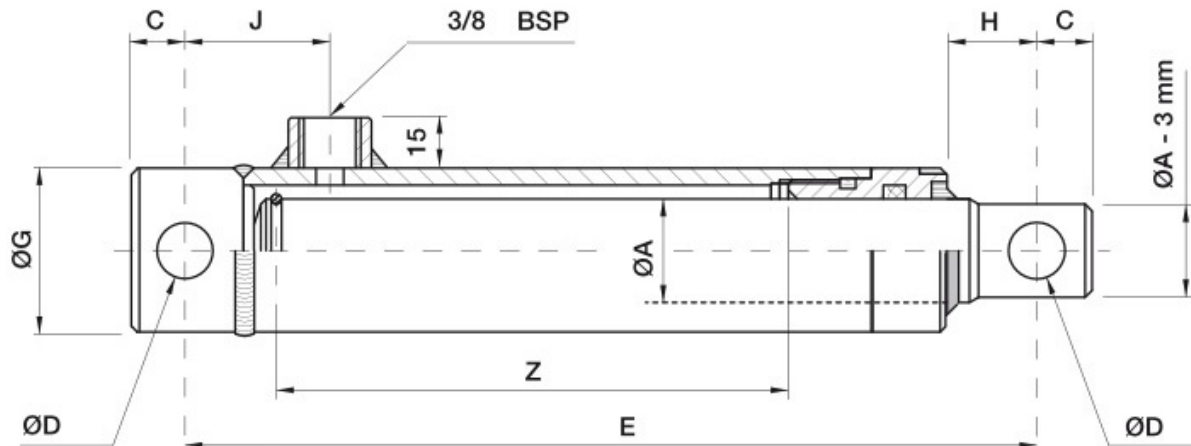
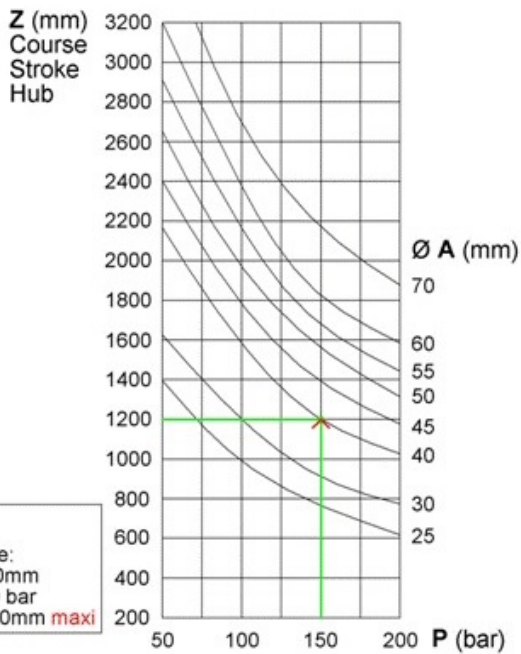


Einfachwirkender Zylinder

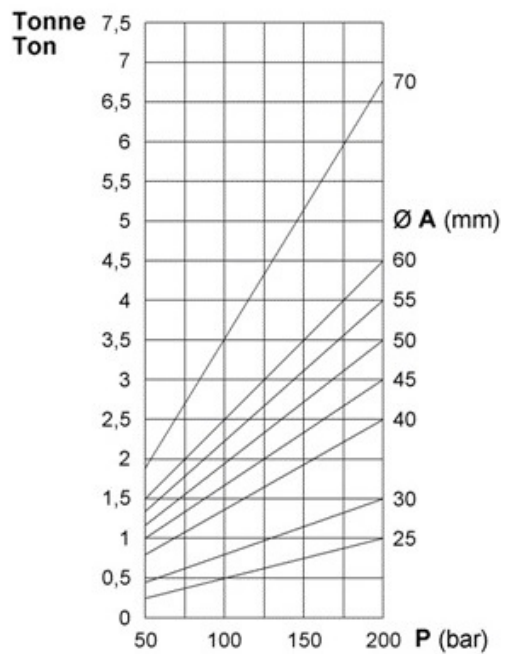


Artikel	OA	Z Hub	C	D	E	G	H	J	Vol. (Ltr)	Gewicht (Kg)
625/10	25	100	14	14.2	190	40	24	40	0.08	1.5
625/20	25	200	14	14.2	290	40	24	40	0.15	2.3
625/30	25	300	14	14.2	390	40	24	40	0.25	3
630/2	30	200	18	16.2	300	50	26	42	0.25	3.6
630/3	30	300	18	16.2	400	50	26	42	0.35	4.8
630/4	30	400	18	16.2	500	50	26	42	0.45	5.9
630/5	30	550	18	16.2	650	50	26	42	0.65	7.5
630/7	30	700	18	16.2	800	50	26	42	0.80	9.2
640/2	40	200	22	23	330	60	32	47	0.40	5.9
640/3	40	300	22	23	430	60	32	47	0.60	7.7
640/4	40	400	22	23	530	60	32	47	0.80	9.3
640/5	40	550	22	23	680	60	32	47	1.10	11.8
640/7	40	700	22	23	830	60	32	47	1.40	14.2

FLAMBAGE BUCKLING KNICKLAST

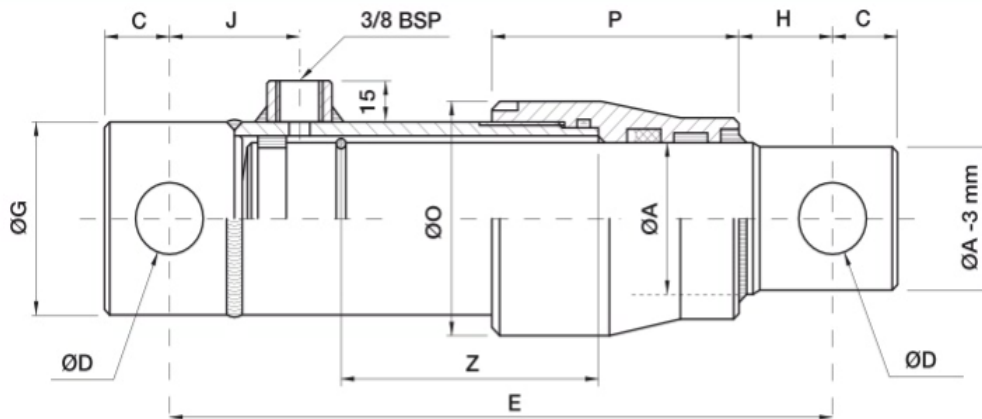


FORCE DE POUSSEE UPWARD THRUST DRUCKKRAFT



Einfachwirkender Zylinder hinten geführt

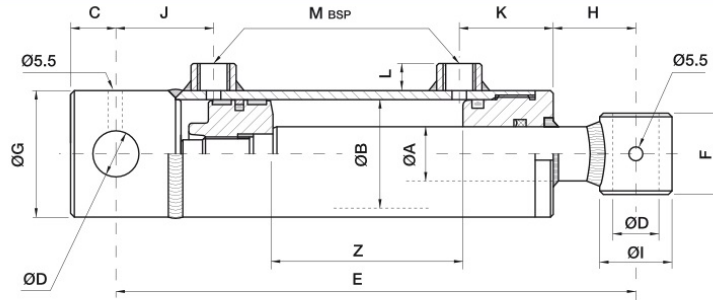
www.rotech.de



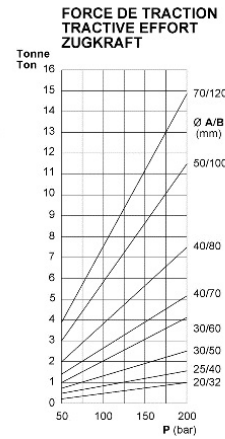
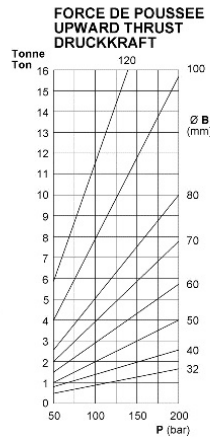
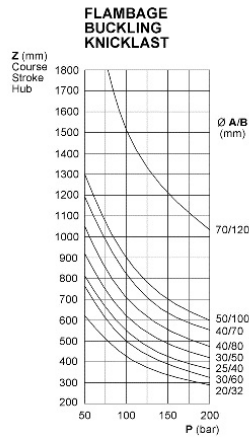
Ref. Artikel	ØA	Z Course Stroke Hub	C	D	E	G	H	J	O	P	Vol. (Ltr)	Poids (Kg) Weight Gewicht
645/2	45	200	22	23	330	60	34	47	70	77	0.40	7
645/3		300			430						0.60	8.9
645/4		400			530						0.80	10.9
645/5		550			680						1.10	13.8
645/7		700			830						1.40	16.6
650/2	50	200	25	25.25	360	65	49	50	75	80	0.50	9
650/3		300			460						0.70	11.2
650/4		400			560						0.95	13.5
650/5		550			710						1.30	16.9
650/7		700			860						1.65	20.3
655/3	55	300	25	25.25	460	70	41	50	85	95	0.85	13.5
655/5		550			710						1.55	20.2
655/7		700			860						2.00	24.1
660/2	60	200	25	25.25	360	75	36	50	90	95	0.65	12.7
660/3		300			460						1.00	15.7
660/4		400			560						1.35	18.6
660/5		550			710						1.85	23.4
660/7		700			860						2.35	28
670/3	70	300	30	30.25	509	85	66	55	100	95	1.35	22.5
670/4		400			609						1.75	26.5
670/5		500			709						2.15	30.5

Doppelwirkender Zylinder

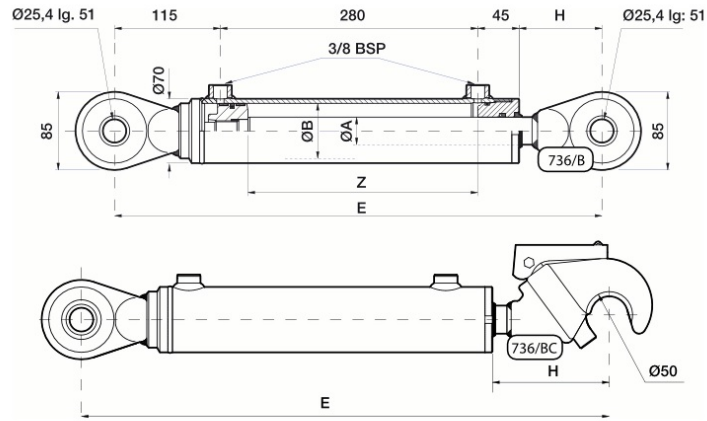
zum Schneiden



Artikel	OA	OB	Z Hub	C	D	E	F	G	H	I	J	K	L	M	Vol. (Ltr)	Gewicht (Kg)
700.05	20	32	50	14	16.2	205	35	40	61	30	32	35	13	1/4	0.05	1.7
700.10	20	32	100	14	16.2	255	35	40	61	30	32	35	13	1/4	0.10	2
700.15	20	32	150	14	16.2	305	35	40	61	30	32	35	13	1/4	0.13	2.3
700.20	20	32	200	14	16.2	355	35	40	61	30	32	35	13	1/4	0.17	2.6
700.30	20	32	300	14	16.2	455	35	40	61	30	32	35	13	1/4	0.25	3.2
701.1	25	40	100	18	20.25	270	40	50	65	35	38	40	15	3/8	0.15	2.9
701.2	25	40	200	18	20.25	370	40	50	65	35	38	40	15	3/8	0.25	3.8
701.3	25	40	300	18	20.25	470	40	50	65	35	38	40	15	3/8	0.40	4.8
701.4	25	40	400	18	20.25	570	40	50	65	35	38	40	15	3/8	0.50	5.7
701.5	25	40	500	18	20.25	670	40	50	65	35	38	40	15	3/8	0.65	6.6
702.1	30	50	100	22	25.25	300	45	60	85	40	42	43	15	3/8	0.20	4.4
702.2	30	50	200	22	25.25	400	45	60	85	40	42	43	15	3/8	0.40	5.7
702.3	30	50	300	22	25.25	500	45	60	85	40	42	43	15	3/8	0.60	6.9
702.3	30	50	300	22	25.25	500	45	60	85	40	42	43	15	3/8	0.60	6.9
702.4	30	50	400	22	25.25	600	45	60	85	40	42	43	15	3/8	0.80	8.1
702.5	30	50	500	22	25.25	700	45	60	85	40	42	43	15	3/8	1.00	9.3
702.6	30	50	600	22	25.25	800	45	60	85	40	42	43	15	3/8	1.20	10.6
702.7	30	50	700	22	25.25	900	45	60	85	40	42	43	15	3/8	1.40	11.9
703.1	30	60	100	22	25.25	300	45	70	83	40	42	45	15	3/8	0.30	5.5
703.2	30	60	200	22	25.25	400	45	70	83	40	42	45	15	3/8	0.60	6.9
703.3	30	60	300	22	25.25	500	45	70	83	40	42	45	15	3/8	0.90	8.2
703.4	30	60	400	22	25.25	600	45	70	83	40	42	45	15	3/8	1.15	9.6
703.5	30	60	500	22	25.25	700	45	70	83	40	42	45	15	3/8	1.45	11
703.6	30	60	600	22	25.25	800	45	70	83	40	42	45	15	3/8	1.75	12.2
703.7	30	60	700	22	25.25	900	45	70	83	40	42	45	15	3/8	2.00	13.6
704.2	40	70	200	28	30.25	410	55	80	82	50	47	49	15	3/8	0.85	10
704.3	40	70	300	28	30.25	510	55	80	82	50	47	49	15	3/8	1.20	12
704.4	40	70	400	28	30.25	610	55	80	82	50	47	49	15	3/8	1.60	14
704.5	40	70	500	28	30.25	710	55	80	82	50	47	49	15	3/8	2.00	16
704.6	40	70	600	28	30.25	810	55	80	82	50	47	49	15	3/8	2.35	18
704.7	40	70	700	28	30.25	910	55	80	82	50	47	49	15	3/8	2.75	20
705.2	40	80	200	28	30.25	410	55	90	70	50	47	54	15	3/8	1.10	12.3
705.3	40	80	300	28	30.25	510	55	90	70	50	47	54	15	3/8	1.60	14.1
705.4	40	80	400	28	30.25	610	55	90	70	50	47	54	15	3/8	2.10	16.3
705.5	40	80	500	28	30.25	710	55	90	70	50	47	54	15	3/8	2.60	18.4
705.6	40	80	600	28	30.25	810	55	90	70	50	47	54	15	3/8	3.10	20.3
705.7	40	80	700	28	30.25	910	55	90	70	50	47	54	15	3/8	3.60	22.5
706.3	50	100	300	28	30.25	525	70	115	75	60	47	60	20	1/2	2.50	25
706.4	50	100	400	28	30.25	625	70	115	75	60	47	60	20	1/2	3.30	28.5
706.5	50	100	500	28	30.25	725	70	115	75	60	47	60	20	1/2	4.10	32
706.7	50	100	700	28	30.25	925	70	115	75	60	47	60	20	1/2	5.65	39.1
706.9	50	100	900	28	30.25	1125	70	115	75	60	47	60	20	1/2	7.25	46.1
707.5	70	120	500	40	40.5	770	80	140	55	80	65	82	20	1/2	5.90	60
707.10	70	120	1000	40	40.5	1270	80	140	55	80	65	82	20	1/2	11.55	90

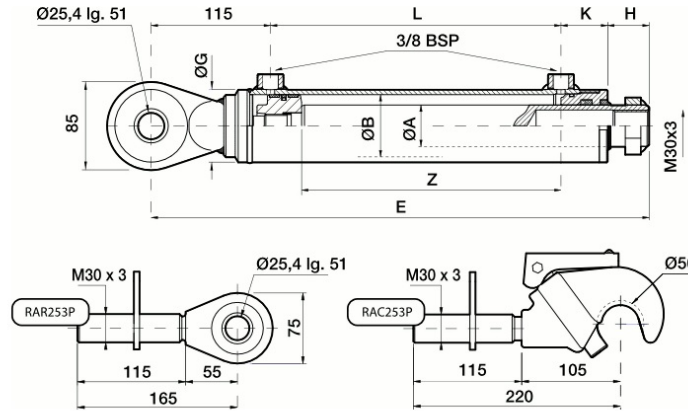


736



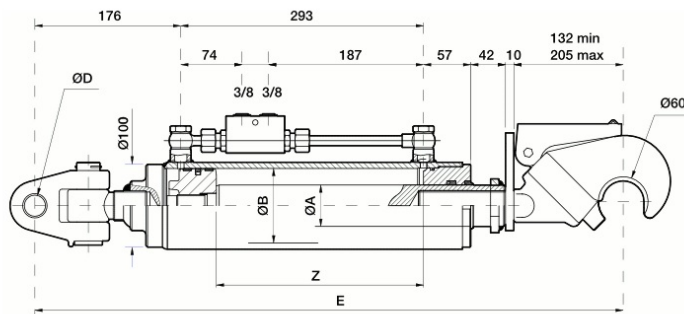
Artikel	OA	OB	Z Hub	E	H	Vol. (Ltr)	Gewicht (Kg)
736 B	30	60	250	530	90	0.75	9.8
736 BC	30	60	250	565	125	0.75	10.8

746 - 747



Artikel	OA	OB	Z Hub	E	G	H	K	L	Vol. (Ltr)	Gewicht (Kg)
RAC253P										2.5
RAR253P										1.5
746 B1	40	60	250	480	70	40	45	280	0.75	8.9
746 C1	40	60	300	530	70	40	45	330	0.90	9.8
747 B1	45	70	250	485	80	39	49	282	1.00	11.2
747 C1	45	70	300	535	80	39	49	332	1.20	12.3

759

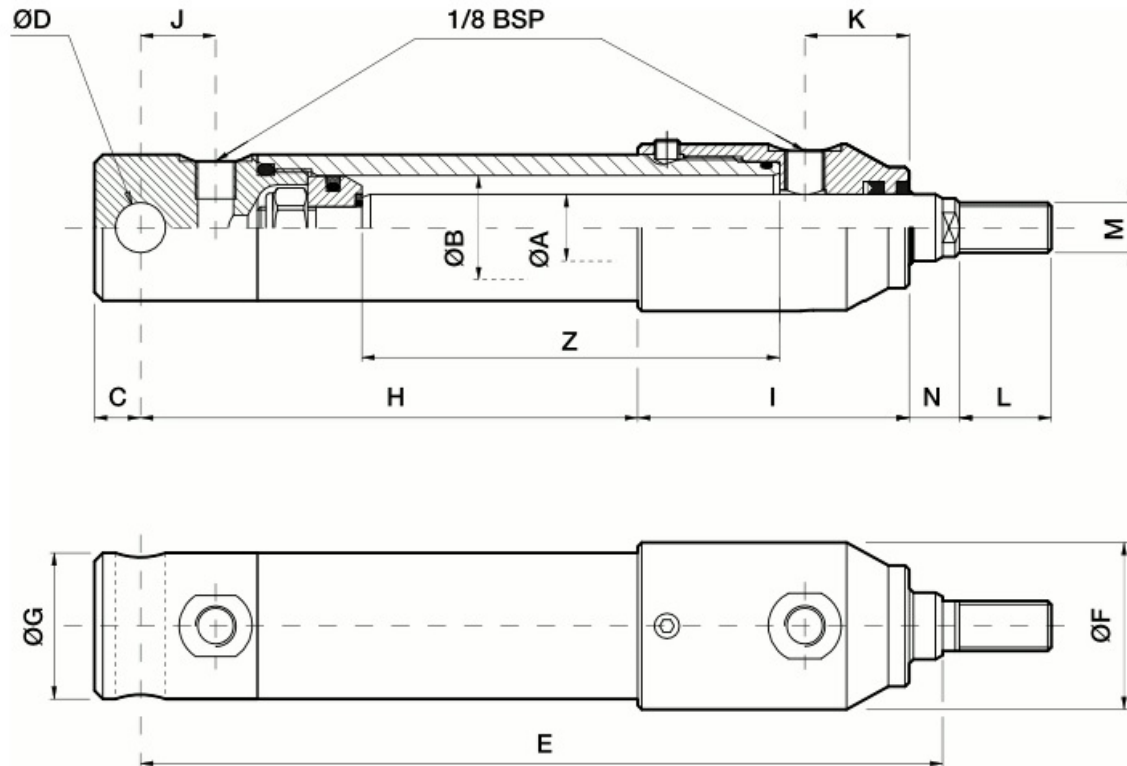


Artikel	OA	OB	Z Hub	D	E	Vol. (Ltr)	Gewicht (Kg)
759/B25	50	90	250	25.4	710	1.7	23
759/B32	50	90	250	32	710	1.7	23

Art. Nr.-759/B25 und 759/B32 werden komplett geliefert (mit Doppelrückschlagventil und Fanghaken)

Doppelwirkender Mikrozyylinder

zum Seitenanfang

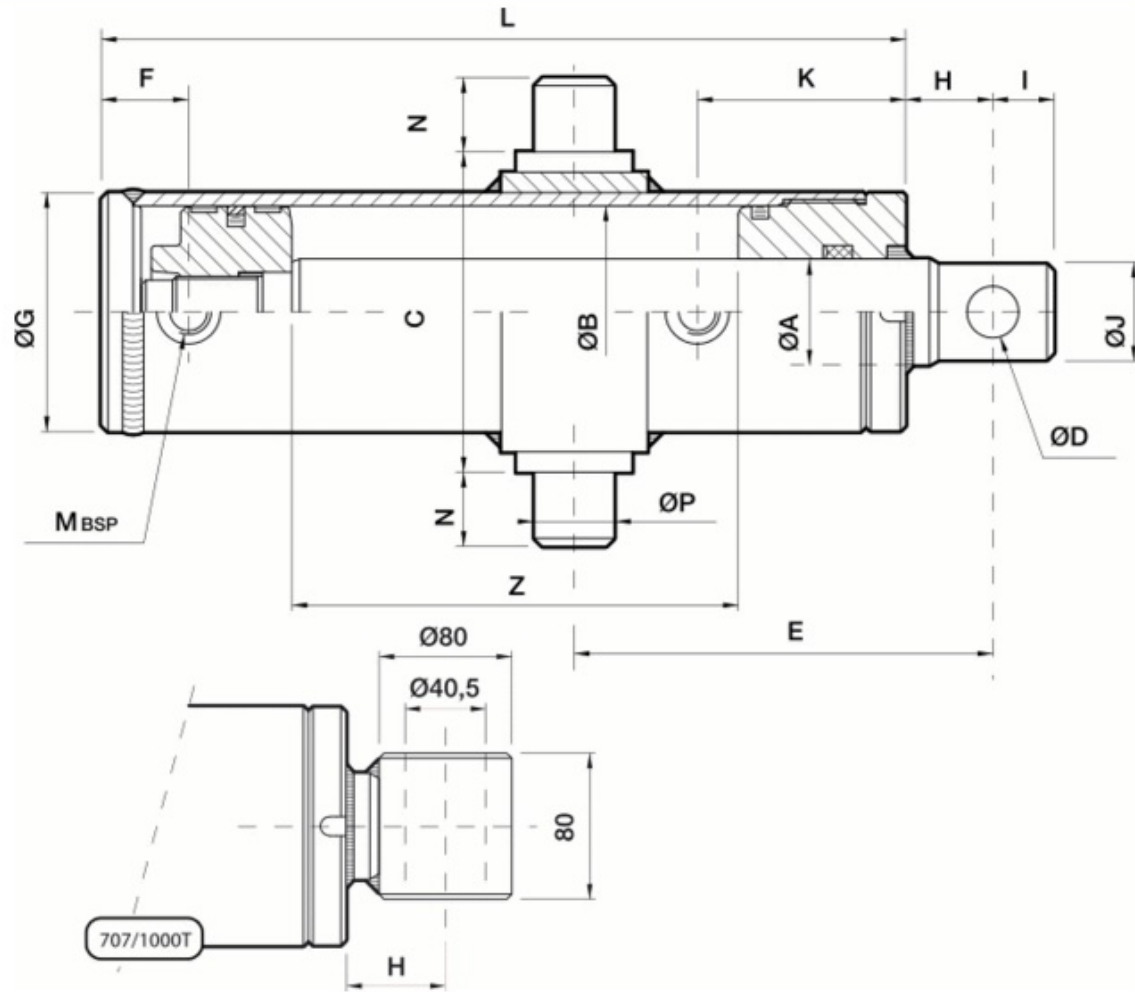


Artikel	OA	OB	Z Hub	C	D	E	F	G	H	I	J	K	L	M	N	Vol. (cm ³)	Gewicht (Kg)
71220/25	12	20	25	9	10	118	35	28	47	60	15	23.5	18	M10	11	12	0.58
71220/50	12	20	50	9	10	143	35	28	72	60	15	23.5	18	M10	11	20	0.66
71220/80	12	20	80	9	10	173	35	28	102	60	15	23.5	18	M10	11	29	0.76
71625/50	16	25	50	11	12	146	40	35	69	65	18	25	22	M12	12	31	0.94
71625/100	16	25	100	11	12	196	40	35	119	65	18	25	22	M12	12	56	1.22
71625/150	16	25	150	11	12	246	40	35	169	65	18	25	22	M12	12	80	1.5
71625/200	16	25	200	11	12	296	40	35	219	65	18	25	22	M12	12	105	1.78

Kleine Abmessungen.
Anschluss verstellbar.

Doppelwirkender Zylinder <<Holzspalter>>

[zum Seitenanfang](#)



Artikel	ØA	ØB	Z Hub	C	D	E	F	G	H	I	J	K	L	M	N	P	Vol. (Ltr)	Gewicht (Kg)
74590/700T	45	90	700	135	20.5	185	37	100	35	25	45	64	851	3/8	45	45	4.6	28
74590/1000T	45	90	1000	135	20.5	185	37	100	35	25	45	64	1151	3/8	45	45	6.5	35
706/1000T	50	100	1000	151	25.5	280	42	115	44	30	48	60	1145	1/2	50	50	8.0	50
760100/1000T	60	100	1000	151	25.5	280	42	115	44	30	58	60	1145	1/2	50	50	8.0	57
770100/1000T	70	100	1000	151	25.5	280	42	115	44	30	68	60	1145	1/2	50	50	8.0	66
707/1000T	70	120	1000	191		280	50	140	55			82	1200	1/2	50	50	11.5	92

Ohne Grundierung